

DATASHEET

PPME1 Rabbit Polyclonal Antibody

CAT. NO. APA16565

KEY FEATURES

Target	PPME1	Source / Host	Rabbit
Reactivity	Human, Mouse, Rat	Clonality	Polyclonal
Applications	WB	Conjugation	Unconjugated
Form / Buffer	Liquid in 0.42% Potassium phosphate, 0.87% Sodium chloride, pH 7.3, 30% glycerol, and 0.01% sodium azide.		Storage at -20°C

BACKGROUND

Demethylates proteins that have been reversibly carboxymethylated. Demethylates PPP2CB (in vitro) and PPP2CA. Binding to PPP2CA displaces the manganese ion and inactivates the enzyme.

APPLICATION

To ensure optimal assay performance, AREX recommends conducting reagent titration tailored to each testing system for optimal detection results.

WB	1:500 - 1:2000
----	----------------

*Results are sample-specific. Please refer to your local assay conditions and test parameters for reference.

PRODUCT OVERVIEW

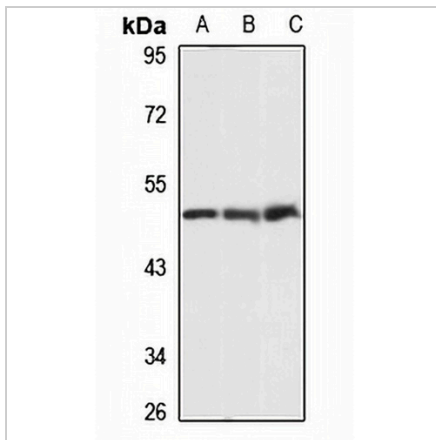
Description	Rabbit polyclonal antibody to PPME1
Specificity	Recognizes endogenous levels of PPME1 protein
Antibody Type	Primary antibody
Immunogen	Recombinant fusion protein of human PPME1. The exact sequence is proprietary.
Purification	The antibody was purified by immunogen affinity chromatography.
Molecular Weight	Predicted: 18; Observed: 42 kD
Form/Buffer	Liquid in 0.42% Potassium phosphate, 0.87% Sodium chloride, pH 7.3, 30% glycerol, and 0.01% sodium azide.
Alternative Names	PME1; Protein phosphatase methylesterase 1; PME-1
Gene Symbol	PPME1
Entrez Gene	51400(Human); 72590(Mouse); 361613(Rat)
SwissProt	Q9Y570(Human); Q8BVQ5(Mouse); Q4FZT2(Rat)

*AREX continuously optimizes our products. Webpage content may not reflect the latest updates. For inquiries, please contact info@arexbio.com or your local distributor.

*Clone Number, Reactivity, Source/Host and Clonality can be found in the product name and Key Features section above.

DATASHEET**PPME1 Rabbit Polyclonal Antibody**

CAT. NO. APA16565

DATA

Western blot analysis of PPME1 expression in A549 (A), mouse testis (B), rat testis (C) whole cell lysates. (Predicted band size: 18; 22; 42; 43 kD; Observed band size: 42 kD)

STORAGE

Store at 4°C short term. For long term storage, store at -20°C, avoiding freeze/thaw cycles.

NOTE

For Research Use Only. Not for diagnostic, therapeutics, prophylactic or in vivo use.