

DATASHEET

MYPT2 Rabbit Polyclonal Antibody

CAT. NO. APA16566

KEY FEATURES

Target	MYPT2	Source / Host	Rabbit
Reactivity	Human	Clonality	Polyclonal
Applications	WB	Conjugation	Unconjugated
Form / Buffer	Liquid in 0.42% Potassium phosphate, 0.87% Sodium chloride, pH 7.3, 30% glycerol, and 0.01% sodium azide.		Storage at -20°C

BACKGROUND

Regulates myosin phosphatase activity. Augments Ca(2+) sensitivity of the contractile apparatus.

APPLICATION

To ensure optimal assay performance, AREX recommends conducting reagent titration tailored to each testing system for optimal detection results.

WB	1:500 - 1:2000
----	----------------

*Results are sample-specific. Please refer to your local assay conditions and test parameters for reference.

PRODUCT OVERVIEW

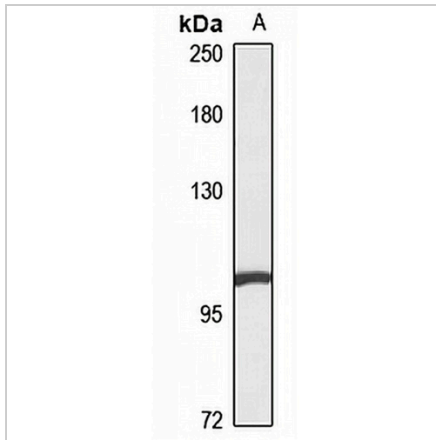
Description	Rabbit polyclonal antibody to MYPT2
Specificity	Recognizes endogenous levels of MYPT2 protein
Antibody Type	Primary antibody
Immunogen	Recombinant fusion protein of human MYPT2. The exact sequence is proprietary.
Purification	The antibody was purified by immunogen affinity chromatography.
Molecular Weight	Predicted: 110 kD; Observed: 110 kD
Form/Buffer	Liquid in 0.42% Potassium phosphate, 0.87% Sodium chloride, pH 7.3, 30% glycerol, and 0.01% sodium azide.
Alternative Names	MYPT2; Protein phosphatase 1 regulatory subunit 12B; Myosin phosphatase-targeting subunit 2; Myosin phosphatase target subunit 2
Gene Symbol	PPP1R12B
Entrez Gene	4660(Human)
SwissProt	O60237(Human)

*AREX continuously optimizes our products. Webpage content may not reflect the latest updates. For inquiries, please contact info@arexbio.com or your local distributor.

*Clone Number, Reactivity, Source/Host and Clonality can be found in the product name and Key Features section above.

DATASHEET**MYPT2 Rabbit Polyclonal Antibody**

CAT. NO. APA16566

DATA

Western blot analysis of MYPT2 expression in U87MG (A) whole cell lysates. (Predicted band size: 110 kD; Observed band size: 110 kD)

STORAGE

Store at 4°C short term. For long term storage, store at -20°C, avoiding freeze/thaw cycles.

NOTE

For Research Use Only. Not for diagnostic, therapeutics, prophylactic or in vivo use.