

**DATASHEET**

**PPP1R3A Rabbit Polyclonal Antibody**

CAT. NO. APA16568

**KEY FEATURES**

Target	PPP1R3A	Source / Host	Rabbit
Reactivity	Human, Mouse, Rat	Clonality	Polyclonal
Applications	WB	Conjugation	Unconjugated
Form / Buffer	Liquid in 0.42% Potassium phosphate, 0.87% Sodium chloride, pH 7.3, 30% glycerol, and 0.01% sodium azide.		Storage at -20°C

**BACKGROUND**

Seems to act as a glycogen-targeting subunit for PP1. PP1 is essential for cell division, and participates in the regulation of glycogen metabolism, muscle contractility and protein synthesis. Plays an important role in glycogen synthesis but is not essential for insulin activation of glycogen synthase .

**APPLICATION**

To ensure optimal assay performance, AREX recommends conducting reagent titration tailored to each testing system for optimal detection results.

WB	1:500 - 1:2000
----	----------------

\*Results are sample-specific. Please refer to your local assay conditions and test parameters for reference.

**PRODUCT OVERVIEW**

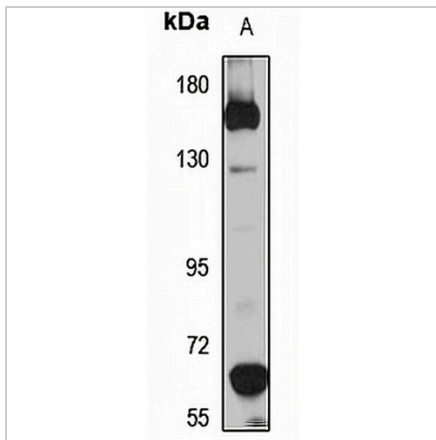
Description	Rabbit polyclonal antibody to PPP1R3A
Specificity	Recognizes endogenous levels of PPP1R3A protein
Antibody Type	Primary antibody
Immunogen	Recombinant fusion protein of human PPP1R3A. The exact sequence is proprietary.
Purification	The antibody was purified by immunogen affinity chromatography.
Molecular Weight	Predicted: 8; Observed: 150 kD
Form/Buffer	Liquid in 0.42% Potassium phosphate, 0.87% Sodium chloride, pH 7.3, 30% glycerol, and 0.01% sodium azide.
Alternative Names	PP1G; Protein phosphatase 1 regulatory subunit 3A; Protein phosphatase 1 glycogen-associated regulatory subunit; Protein phosphatase type-1 glycogen targeting subunit; RG1
Gene Symbol	PPP1R3A
Entrez Gene	5506(Human); 140491(Mouse)
SwissProt	Q16821(Human); Q99MR9(Mouse)

\*AREX continuously optimizes our products. Webpage content may not reflect the latest updates. For inquiries, please contact [info@arexbio.com](mailto:info@arexbio.com) or your local distributor.

\*Clone Number, Reactivity, Source/Host and Clonality can be found in the product name and Key Features section above.

**DATASHEET****PPP1R3A Rabbit Polyclonal Antibody**

CAT. NO. APA16568

**DATA**

Western blot analysis of PPP1R3A expression in mouse liver (A) whole cell lysates.  
(Predicted band size: 8; 125 kD; Observed band size: 150 kD)

**STORAGE**

Store at 4°C short term. For long term storage, store at -20°C, avoiding freeze/thaw cycles.

**NOTE**

For Research Use Only. Not for diagnostic, therapeutics, prophylactic or in vivo use.