

DATASHEET

Spinophilin Rabbit Polyclonal Antibody

CAT. NO. APA16569

KEY FEATURES

Target	Spinophilin	Source / Host	Rabbit
Reactivity	Human, Mouse, Rat	Clonality	Polyclonal
Applications	WB	Conjugation	Unconjugated
Form / Buffer	Liquid in 0.42% Potassium phosphate, 0.87% Sodium chloride, pH 7.3, 30% glycerol, and 0.01% sodium azide.		Storage at -20°C

BACKGROUND

Seems to act as a scaffold protein in multiple signaling pathways. Modulates excitatory synaptic transmission and dendritic spine morphology. Binds to actin filaments (F-actin) and shows cross-linking activity. Binds along the sides of the F-actin. May play an important role in linking the actin cytoskeleton to the plasma membrane at the synaptic junction. Believed to target protein phosphatase 1/PP1 to dendritic spines, which are rich in F-actin, and regulates its specificity toward ion channels and other substrates, such as AMPA-type and NMDA-type glutamate receptors. Plays a role in regulation of G-protein coupled receptor signaling, including dopamine D2 receptors and alpha-adrenergic receptors.

APPLICATION

To ensure optimal assay performance, AREX recommends conducting reagent titration tailored to each testing system for optimal detection results.

WB	1:500 - 1:2000
----	----------------

*Results are sample-specific. Please refer to your local assay conditions and test parameters for reference.

PRODUCT OVERVIEW

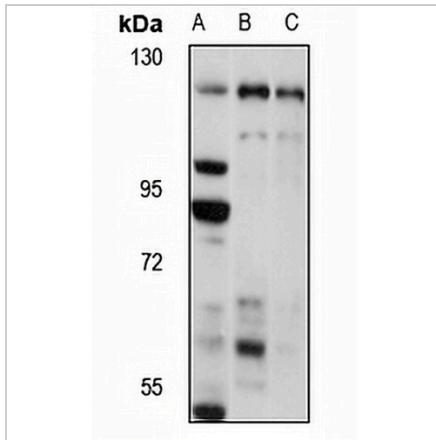
Description	Rabbit polyclonal antibody to Spinophilin
Specificity	Recognizes endogenous levels of Spinophilin protein
Antibody Type	Primary antibody
Immunogen	KLH-conjugated synthetic peptide of human Spinophilin. The exact sequence is proprietary.
Purification	The antibody was purified by immunogen affinity chromatography.
Molecular Weight	Predicted: 89 kD; Observed: 126 kD
Form/Buffer	Liquid in 0.42% Potassium phosphate, 0.87% Sodium chloride, pH 7.3, 30% glycerol, and 0.01% sodium azide.
Alternative Names	PPP1R6; Neurabin-2; Neurabin-II; Protein phosphatase 1 regulatory subunit 9B; Spinophilin
Gene Symbol	PPP1R9B
Entrez Gene	84687(Human); 217124(Mouse); 84686(Rat)
SwissProt	Q96SB3(Human); Q6R891(Mouse); O35274(Rat)

*AREX continuously optimizes our products. Webpage content may not reflect the latest updates. For inquiries, please contact info@arexbio.com or your local distributor.

*Clone Number, Reactivity, Source/Host and Clonality can be found in the product name and Key Features section above.

DATASHEET**Spinophilin Rabbit Polyclonal Antibody**

CAT. NO. APA16569

DATA

Western blot analysis of Spinophilin expression in K562 (A), mouse brain (B), rat brain (C) whole cell lysates. (Predicted band size: 89 kD; Observed band size: 126 kD)

STORAGE

Store at 4°C short term. For long term storage, store at -20°C, avoiding freeze/thaw cycles.

NOTE

For Research Use Only. Not for diagnostic, therapeutics, prophylactic or in vivo use.