

**DATASHEET**

**PPP2R5E Rabbit Polyclonal Antibody**

CAT. NO. APA16571

**KEY FEATURES**

Target	PPP2R5E	Source / Host	Rabbit
Reactivity	Human, Mouse, Rat	Clonality	Polyclonal
Applications	WB	Conjugation	Unconjugated
Form / Buffer	Liquid in 0.42% Potassium phosphate, 0.87% Sodium chloride, pH 7.3, 30% glycerol, and 0.01% sodium azide.	Storage	at-20°C

**BACKGROUND**

The B regulatory subunit might modulate substrate selectivity and catalytic activity, and might also direct the localization of the catalytic enzyme to a particular subcellular compartment.

**APPLICATION**

To ensure optimal assay performance, AREX recommends conducting reagent titration tailored to each testing system for optimal detection results.

WB	1:500 - 1:2000
----	----------------

\*Results are sample-specific. Please refer to your local assay conditions and test parameters for reference.

**PRODUCT OVERVIEW**

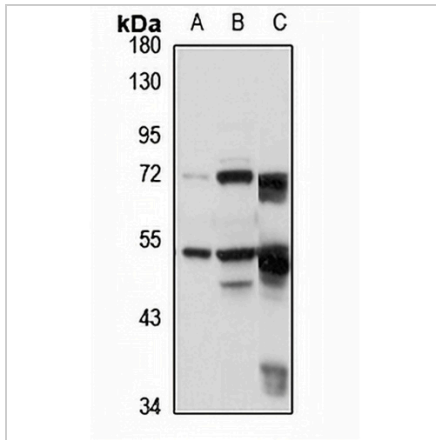
Description	Rabbit polyclonal antibody to PPP2R5E
Specificity	Recognizes endogenous levels of PPP2R5E protein
Antibody Type	Primary antibody
Immunogen	Recombinant fusion protein of human PPP2R5E. The exact sequence is proprietary.
Purification	The antibody was purified by immunogen affinity chromatography.
Molecular Weight	Predicted: 46; Observed: 54 kD
Form/Buffer	Liquid in 0.42% Potassium phosphate, 0.87% Sodium chloride, pH 7.3, 30% glycerol, and 0.01% sodium azide.
Alternative Names	Serine/threonine-protein phosphatase 2A 56 kDa regulatory subunit epsilon isoform; PP2A B subunit isoform B'-epsilon; PP2A B subunit isoform B56-epsilon; PP2A B subunit isoform PR61-epsilon; PP2A B subunit isoform R5-epsilon
Gene Symbol	PPP2R5E
Entrez Gene	5529(Human); 26932(Mouse)
SwissProt	Q16537(Human); Q61151(Mouse)

\*AREX continuously optimizes our products. Webpage content may not reflect the latest updates. For inquiries, please contact [info@arexbio.com](mailto:info@arexbio.com) or your local distributor.

\*Clone Number, Reactivity, Source/Host and Clonality can be found in the product name and Key Features section above.

**DATASHEET****PPP2R5E Rabbit Polyclonal Antibody**

CAT. NO. APA16571

**DATA**

Western blot analysis of PPP2R5E expression in Jurkat (A), NIH3T3 (B), mouse kidney (C) whole cell lysates. (Predicted band size: 46; 54 kD; Observed band size: 54 kD)

**STORAGE**

Store at 4°C short term. For long term storage, store at -20°C, avoiding freeze/thaw cycles.

**NOTE**

For Research Use Only. Not for diagnostic, therapeutics, prophylactic or in vivo use.