

**DATASHEET**
**PPP3CB Rabbit Polyclonal Antibody**
**CAT. NO. APA16572**
**KEY FEATURES**

Target	PPP3CB	Source / Host	Rabbit
Reactivity	Human, Mouse, Rat	Clonality	Polyclonal
Applications	WB	Conjugation	Unconjugated
Form / Buffer	Liquid in 0.42% Potassium phosphate, 0.87% Sodium chloride, pH 7.3, 30% glycerol, and 0.01% sodium azide.		Storage at -20°C

**BACKGROUND**

Calcium-dependent, calmodulin-stimulated protein phosphatase which plays an essential role in the transduction of intracellular Ca(2+)-mediated signals. Dephosphorylates TFEB in response to lysosomal Ca(2+) release, resulting in TFEB nuclear translocation and stimulation of lysosomal biogenesis. Dephosphorylates and activates transcription factor NFATC1. Dephosphorylates and inactivates transcription factor ELK1. Dephosphorylates DARPP32. Negatively regulates MAP3K14/NIK signaling via inhibition of nuclear translocation of the transcription factors RELA and RELB. May play a role in skeletal muscle fiber type specification.

**APPLICATION**

To ensure optimal assay performance, AREX recommends conducting reagent titration tailored to each testing system for optimal detection results.

WB	1:500 - 1:2000
----	----------------

\*Results are sample-specific. Please refer to your local assay conditions and test parameters for reference.

**PRODUCT OVERVIEW**

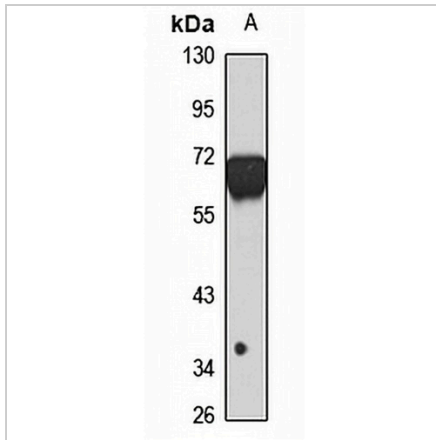
Description	Rabbit polyclonal antibody to PPP3CB
Specificity	Recognizes endogenous levels of PPP3CB protein
Antibody Type	Primary antibody
Immunogen	Recombinant fusion protein of human PPP3CB. The exact sequence is proprietary.
Purification	The antibody was purified by immunogen affinity chromatography.
Molecular Weight	Predicted: 58; Observed: 69 kD
Form/Buffer	Liquid in 0.42% Potassium phosphate, 0.87% Sodium chloride, pH 7.3, 30% glycerol, and 0.01% sodium azide.
Alternative Names	CALNA2; CALNB; CNA2; Serine/threonine-protein phosphatase 2B catalytic subunit beta isoform; CAM-PRP catalytic subunit; Calmodulin-dependent calcineurin A subunit beta isoform
Gene Symbol	PPP3CB
Entrez Gene	5532(Human); 19056(Mouse); 24675(Rat)
SwissProt	P16298(Human); P48453(Mouse); P20651(Rat)

\*AREX continuously optimizes our products. Webpage content may not reflect the latest updates. For inquiries, please contact [info@arexbio.com](mailto:info@arexbio.com) or your local distributor.

\*Clone Number, Reactivity, Source/Host and Clonality can be found in the product name and Key Features section above.

**DATASHEET****PPP3CB Rabbit Polyclonal Antibody**

CAT. NO. APA16572

**DATA**

Western blot analysis of PPP3CB expression in mouse brain (A) whole cell lysates.  
(Predicted band size: 58; 59 kD; Observed band size: 69 kD)

**STORAGE**

Store at 4°C short term. For long term storage, store at -20°C, avoiding freeze/thaw cycles.

**NOTE**

For Research Use Only. Not for diagnostic, therapeutics, prophylactic or in vivo use.