

**DATASHEET**

**PP6 Rabbit Polyclonal Antibody**

CAT. NO. APA16574

**KEY FEATURES**

Target	PP6	Source / Host	Rabbit
Reactivity	Human, Mouse, Rat	Clonality	Polyclonal
Applications	WB	Conjugation	Unconjugated
Form / Buffer	Liquid in 0.42% Potassium phosphate, 0.87% Sodium chloride, pH 7.3, 30% glycerol, and 0.01% sodium azide.		Storage at-20°C

**BACKGROUND**

Catalytic subunit of protein phosphatase 6 (PP6) . PP6 is a component of a signaling pathway regulating cell cycle progression in response to IL2 receptor stimulation . N-terminal domain restricts G1 to S phase progression in cancer cells, in part through control of cyclin D1 . During mitosis, regulates spindle positioning . Down-regulates MAP3K7 kinase activation of the IL1 signaling pathway by dephosphorylation of MAP3K7 . Also participates in the innate immune defense against viruses by desphosphorylating RIGI, an essential step that triggers RIGI-mediated signaling activation . Also regulates innate immunity by acting as a negative regulator of the cGAS-STING pathway: mediates dephosphorylation and inactivation of CGAS and STING1 .

**APPLICATION**

To ensure optimal assay performance, AREX recommends conducting reagent titration tailored to each testing system for optimal detection results.

WB	1:500 - 1:2000
----	----------------

\*Results are sample-specific. Please refer to your local assay conditions and test parameters for reference.

**PRODUCT OVERVIEW**

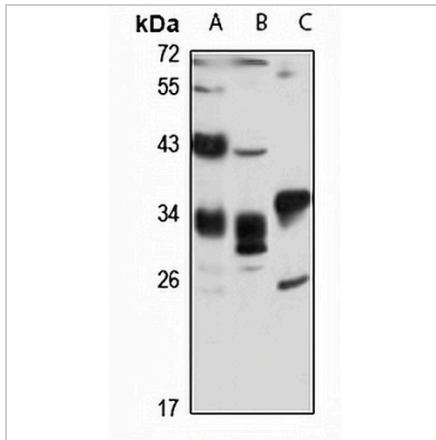
Description	Rabbit polyclonal antibody to PP6
Specificity	Recognizes endogenous levels of PP6 protein
Antibody Type	Primary antibody
Immunogen	Recombinant fusion protein of human PP6. The exact sequence is proprietary.
Purification	The antibody was purified by immunogen affinity chromatography.
Molecular Weight	Predicted: 32; Observed: 35 kD
Form/Buffer	Liquid in 0.42% Potassium phosphate, 0.87% Sodium chloride, pH 7.3, 30% glycerol, and 0.01% sodium azide.
Alternative Names	PPP6; Serine/threonine-protein phosphatase 6 catalytic subunit; PP6C
Gene Symbol	PPP6C
Entrez Gene	5537(Human); 67857(Mouse); 171121(Rat)
SwissProt	O00743(Human); Q9CQR6(Mouse); Q64620(Rat)

\*AREX continuously optimizes our products. Webpage content may not reflect the latest updates. For inquiries, please contact [info@arexbio.com](mailto:info@arexbio.com) or your local distributor.

\*Clone Number, Reactivity, Source/Host and Clonality can be found in the product name and Key Features section above.

**DATASHEET****PP6 Rabbit Polyclonal Antibody**

CAT. NO. APA16574

**DATA**

Western blot analysis of PP6 expression in HepG2 (A), mouse kidney (B), rat testis (C) whole cell lysates. (Predicted band size: 32; 35; 38 kD; Observed band size: 35 kD)

**STORAGE**

Store at 4°C short term. For long term storage, store at -20°C, avoiding freeze/thaw cycles.

**NOTE**

For Research Use Only. Not for diagnostic, therapeutics, prophylactic or in vivo use.