

## DATASHEET

# PP6R3 Rabbit Polyclonal Antibody

CAT. NO. APA16575

### KEY FEATURES

Target	PP6R3	Source / Host	Rabbit
Reactivity	Human, Mouse, Rat	Clonality	Polyclonal
Applications	WB	Conjugation	Unconjugated
Form / Buffer	Liquid in 0.42% Potassium phosphate, 0.87% Sodium chloride, pH 7.3, 30% glycerol, and 0.01% sodium azide.		Storage at -20°C

### BACKGROUND

Regulatory subunit of protein phosphatase 6 (PP6). May function as a scaffolding PP6 subunit. May have an important role in maintaining immune self-tolerance.

### APPLICATION

To ensure optimal assay performance, AREX recommends conducting reagent titration tailored to each testing system for optimal detection results.

WB	1:500 - 1:2000
----	----------------

\*Results are sample-specific. Please refer to your local assay conditions and test parameters for reference.

### PRODUCT OVERVIEW

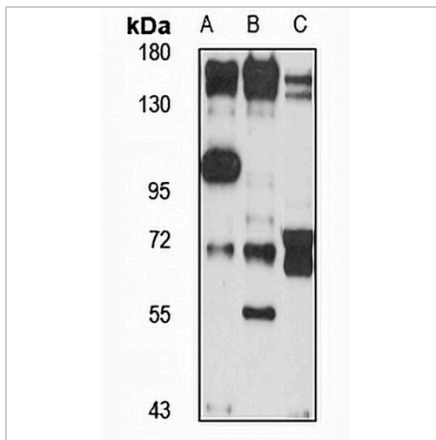
Description	Rabbit polyclonal antibody to PP6R3
Specificity	Recognizes endogenous levels of PP6R3 protein
Antibody Type	Primary antibody
Immunogen	Recombinant fusion protein of human PP6R3. The exact sequence is proprietary.
Purification	The antibody was purified by immunogen affinity chromatography.
Molecular Weight	Predicted: 88; Observed: 140 kD
Form/Buffer	Liquid in 0.42% Potassium phosphate, 0.87% Sodium chloride, pH 7.3, 30% glycerol, and 0.01% sodium azide.
Alternative Names	C11orf23; KIAA1558; PP6R3; SAPL; SAPS3; Serine/threonine-protein phosphatase 6 regulatory subunit 3; SAPS domain family member 3; Sporulation-induced transcript 4-associated protein SAPL
Gene Symbol	PPP6R3
Entrez Gene	55291(Human); 52036(Mouse)
SwissProt	Q5H9R7(Human); Q922D4(Mouse)

\*AREX continuously optimizes our products. Webpage content may not reflect the latest updates. For inquiries, please contact [info@arexbio.com](mailto:info@arexbio.com) or your local distributor.

\*Clone Number, Reactivity, Source/Host and Clonality can be found in the product name and Key Features section above.

**DATASHEET****PP6R3 Rabbit Polyclonal Antibody**

CAT. NO. APA16575

**DATA**

Western blot analysis of PP6R3 expression in U87MG (A), mouse lung (B), rat lung (C) whole cell lysates. (Predicted band size: 88; 94; 96; 97; 98 kD; Observed band size: 140 kD)

**STORAGE**

Store at 4°C short term. For long term storage, store at -20°C, avoiding freeze/thaw cycles.

**NOTE**

For Research Use Only. Not for diagnostic, therapeutics, prophylactic or in vivo use.