

## DATASHEET

# PPT2 Rabbit Polyclonal Antibody

CAT. NO. APA16576

### KEY FEATURES

Target	PPT2	Source / Host	Rabbit
Reactivity	Human, Mouse, Rat	Clonality	Polyclonal
Applications	WB	Conjugation	Unconjugated
Form / Buffer	Liquid in 0.42% Potassium phosphate, 0.87% Sodium chloride, pH 7.3, 30% glycerol, and 0.01% sodium azide.		Storage at -20°C

### BACKGROUND

Catalyzes the cleavage of thioester bonds from S-palmitoyl-CoA or S-palmitoyl-N-acetylcysteamine (unbranched structures) but does not have activity against palmitoylcysteine or palmitoylated proteins, branched structures or bulky head groups. Conversely, hydrolyzes both long and short chain fatty acyl-CoA substrate.

### APPLICATION

To ensure optimal assay performance, AREX recommends conducting reagent titration tailored to each testing system for optimal detection results.

WB	1:500 - 1:1000
----	----------------

\*Results are sample-specific. Please refer to your local assay conditions and test parameters for reference.

### PRODUCT OVERVIEW

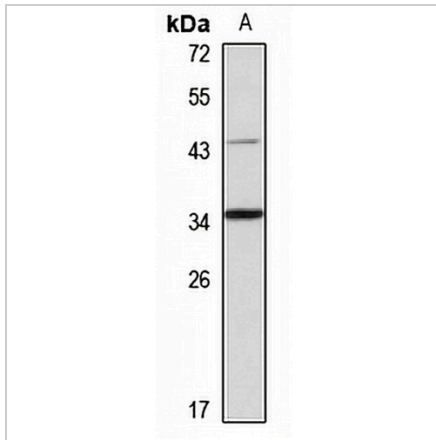
Description	Rabbit polyclonal antibody to PPT2
Specificity	Recognizes endogenous levels of PPT2 protein
Antibody Type	Primary antibody
Immunogen	Recombinant fusion protein of human PPT2. The exact sequence is proprietary.
Purification	The antibody was purified by immunogen affinity chromatography.
Molecular Weight	Predicted: 34 kD; Observed: 36 kD
Form/Buffer	Liquid in 0.42% Potassium phosphate, 0.87% Sodium chloride, pH 7.3, 30% glycerol, and 0.01% sodium azide.
Alternative Names	Lysosomal thioesterase PPT2; PPT-2; S-thioesterase G14
Gene Symbol	PPT2
Entrez Gene	9374(Human); 54397(Mouse); 54398(Rat)
SwissProt	Q9UMR5(Human); O35448(Mouse); O70489(Rat)

\*AREX continuously optimizes our products. Webpage content may not reflect the latest updates. For inquiries, please contact [info@arexbio.com](mailto:info@arexbio.com) or your local distributor.

\*Clone Number, Reactivity, Source/Host and Clonality can be found in the product name and Key Features section above.

**DATASHEET****PPT2 Rabbit Polyclonal Antibody**

CAT. NO. APA16576

**DATA**

Western blot analysis of PPT2 expression in mouse liver (A) whole cell lysates. (Predicted band size: 34 kD; Observed band size: 36 kD)

**STORAGE**

Store at 4°C short term. For long term storage, store at -20°C, avoiding freeze/thaw cycles.

**NOTE**

For Research Use Only. Not for diagnostic, therapeutics, prophylactic or in vivo use.