

DATASHEET

PRAP1 Rabbit Polyclonal Antibody

CAT. NO. APA16579

KEY FEATURES

Target	PRAP1	Source / Host	Rabbit
Reactivity	Human, Mouse, Rat	Clonality	Polyclonal
Applications	WB	Conjugation	Unconjugated
Form / Buffer	Liquid in 0.42% Potassium phosphate, 0.87% Sodium chloride, pH 7.3, 30% glycerol, and 0.01% sodium azide.		Storage at-20°C

BACKGROUND

Lipid-binding protein which promotes lipid absorption by facilitating MTTP-mediated lipid transfer (mainly triglycerides and phospholipids) and MTTP-mediated apoB lipoprotein assembly and secretion . Protects the gastrointestinal epithelium from irradiation-induced apoptosis . May play an important role in maintaining normal growth homeostasis in epithelial cells and MTTP-mediated apoB lipoprotein assembly and secretion . Protects the gastrointestinal epithelium from irradiation-induced apoptosis . May play an important role in maintaining normal growth homeostasis in epithelial cells . Involved in p53/TP53-dependent cell survival after DNA damage .

APPLICATION

To ensure optimal assay performance, AREX recommends conducting reagent titration tailored to each testing system for optimal detection results.

WB	1:500 - 1:2000
----	----------------

*Results are sample-specific. Please refer to your local assay conditions and test parameters for reference.

PRODUCT OVERVIEW

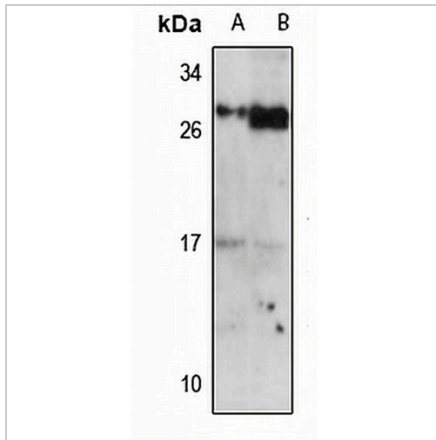
Description	Rabbit polyclonal antibody to PRAP1
Specificity	Recognizes endogenous levels of PRAP1 protein
Antibody Type	Primary antibody
Immunogen	Recombinant fusion protein of human PRAP1. The exact sequence is proprietary.
Purification	The antibody was purified by immunogen affinity chromatography.
Molecular Weight	Predicted: 10; Observed: 17 kD
Form/Buffer	Liquid in 0.42% Potassium phosphate, 0.87% Sodium chloride, pH 7.3, 30% glycerol, and 0.01% sodium azide.
Alternative Names	UPA; Proline-rich acidic protein 1; Epididymis tissue protein Li 178; Uterine-specific proline-rich acidic protein
Gene Symbol	PRAP1
Entrez Gene	118471(Human); 22264(Mouse); 60574(Rat)
SwissProt	Q96NZ9(Human); Q80XD8(Mouse); Q9ES75(Rat)

*AREX continuously optimizes our products. Webpage content may not reflect the latest updates. For inquiries, please contact info@arexbio.com or your local distributor.

*Clone Number, Reactivity, Source/Host and Clonality can be found in the product name and Key Features section above.

DATASHEET**PRAP1 Rabbit Polyclonal Antibody**

CAT. NO. APA16579

DATA**STORAGE**

Store at 4°C short term. For long term storage, store at -20°C, avoiding freeze/thaw cycles.

NOTE

For Research Use Only. Not for diagnostic, therapeutics, prophylactic or in vivo use.