

DATASHEET

PRDM15 Rabbit Polyclonal Antibody

CAT. NO. APA16582

KEY FEATURES

Target	PRDM15	Source / Host	Rabbit
Reactivity	Human	Clonality	Polyclonal
Applications	WB	Conjugation	Unconjugated
Form / Buffer	Liquid in 0.42% Potassium phosphate, 0.87% Sodium chloride, pH 7.3, 30% glycerol, and 0.01% sodium azide.		Storage at -20°C

BACKGROUND

Sequence-specific DNA-binding transcriptional regulator. Plays a role as a molecular node in a transcriptional network regulating embryonic development and cell fate decision. Stimulates the expression of upstream key transcriptional activators and repressors of the Wnt/beta-catenin and MAPK/ERK pathways, respectively, that are essential for naive pluripotency and self-renewal maintenance of embryonic stem cells (ESCs). Specifically promotes SPRY1 and RSPO1 transcription activation through recognition and direct binding of a specific DNA sequence in their promoter regions. Involved in early embryo development. Also plays a role in induced pluripotent stem cells (iPSCs) reprogramming.

APPLICATION

To ensure optimal assay performance, AREX recommends conducting reagent titration tailored to each testing system for optimal detection results.

WB	1:500 - 1:2000
----	----------------

*Results are sample-specific. Please refer to your local assay conditions and test parameters for reference.

PRODUCT OVERVIEW

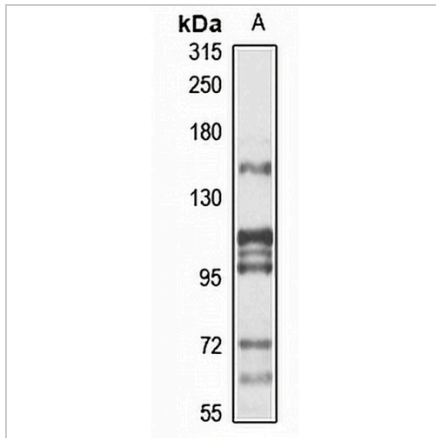
Description	Rabbit polyclonal antibody to PRDM15
Specificity	Recognizes endogenous levels of PRDM15 protein
Antibody Type	Primary antibody
Immunogen	Recombinant fusion protein of human PRDM15. The exact sequence is proprietary.
Purification	The antibody was purified by immunogen affinity chromatography.
Molecular Weight	Predicted: 57; Observed: 155 kD
Form/Buffer	Liquid in 0.42% Potassium phosphate, 0.87% Sodium chloride, pH 7.3, 30% glycerol, and 0.01% sodium azide.
Alternative Names	C21orf83; ZNF298; PR domain zinc finger protein 15; PR domain-containing protein 15; Zinc finger protein 298
Gene Symbol	PRDM15
Entrez Gene	63977(Human)
SwissProt	P57071(Human)

*AREX continuously optimizes our products. Webpage content may not reflect the latest updates. For inquiries, please contact info@arexbio.com or your local distributor.

*Clone Number, Reactivity, Source/Host and Clonality can be found in the product name and Key Features section above.

DATASHEET**PRDM15 Rabbit Polyclonal Antibody**

CAT. NO. APA16582

DATA

Western blot analysis of PRDM15 expression in HeLa (A) whole cell lysates. (Predicted band size: 57; 62; 133; 135; 169 kD; Observed band size: 155 kD)

STORAGE

Store at 4°C short term. For long term storage, store at -20°C, avoiding freeze/thaw cycles.

NOTE

For Research Use Only. Not for diagnostic, therapeutics, prophylactic or in vivo use.