

DATASHEET

PRDM2 Rabbit Polyclonal Antibody

CAT. NO. APA16583

KEY FEATURES

Target	PRDM2	Source / Host	Rabbit
Reactivity	Human, Mouse, Rat	Clonality	Polyclonal
Applications	WB	Conjugation	Unconjugated
Form / Buffer	Liquid in 0.42% Potassium phosphate, 0.87% Sodium chloride, pH 7.3, 30% glycerol, and 0.01% sodium azide.		Storage at-20°C

BACKGROUND

S-adenosyl-L-methionine-dependent histone methyltransferase that specifically methylates 'Lys-9' of histone H3. May function as a DNA-binding transcription factor. Binds to the macrophage-specific TPA-responsive element (MTE) of the HMOX1 (heme oxygenase 1) gene and may act as a transcriptional activator of this gene.

APPLICATION

To ensure optimal assay performance, AREX recommends conducting reagent titration tailored to each testing system for optimal detection results.

WB	1:500 - 1:2000
----	----------------

*Results are sample-specific. Please refer to your local assay conditions and test parameters for reference.

PRODUCT OVERVIEW

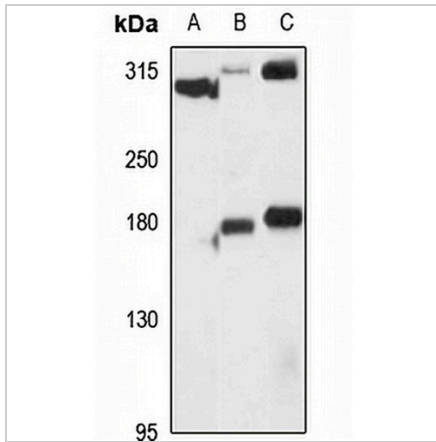
Description	Rabbit polyclonal antibody to PRDM2
Specificity	Recognizes endogenous levels of PRDM2 protein
Antibody Type	Primary antibody
Immunogen	KLH-conjugated synthetic peptide of human PRDM2. The exact sequence is proprietary.
Purification	The antibody was purified by immunogen affinity chromatography.
Molecular Weight	Predicted: 25; Observed: 300 kD
Form/Buffer	Liquid in 0.42% Potassium phosphate, 0.87% Sodium chloride, pH 7.3, 30% glycerol, and 0.01% sodium azide.
Alternative Names	KMT8; RIZ; PR domain zinc finger protein 2; GATA-3-binding protein G3B; Lysine N-methyltransferase 8; MTB-ZF; MTE-binding protein; PR domain-containing protein 2; Retinoblastoma protein-interacting zinc finger protein; Zinc finger protein RIZ
Gene Symbol	PRDM2
Entrez Gene	7799(Human); 313678(Rat)
SwissProt	Q13029(Human); Q63755(Rat)

*AREX continuously optimizes our products. Webpage content may not reflect the latest updates. For inquiries, please contact info@arexbio.com or your local distributor.

*Clone Number, Reactivity, Source/Host and Clonality can be found in the product name and Key Features section above.

DATASHEET**PRDM2 Rabbit Polyclonal Antibody**

CAT. NO. APA16583

DATA

Western blot analysis of PRDM2 expression in MCF7 (A), mouse liver (B), rat brain (C) whole cell lysates. (Predicted band size: 25; 162; 166; 184; 188 kD; Observed band size: 300 kD)

STORAGE

Store at 4°C short term. For long term storage, store at -20°C, avoiding freeze/thaw cycles.

NOTE

For Research Use Only. Not for diagnostic, therapeutics, prophylactic or in vivo use.