

DATASHEET

PREB Rabbit Polyclonal Antibody

CAT. NO. APA16584

KEY FEATURES

Target	PREB	Source / Host	Rabbit
Reactivity	Human, Mouse	Clonality	Polyclonal
Applications	WB	Conjugation	Unconjugated
Form / Buffer	Liquid in 0.42% Potassium phosphate, 0.87% Sodium chloride, pH 7.3, 30% glycerol, and 0.01% sodium azide.		Storage at -20°C

BACKGROUND

Guanine nucleotide exchange factor (GEF) that regulates the assembly of the coat protein complex II/COPII in endoplasmic reticulum (ER) to Golgi vesicle-mediated transport. Selectively activates SAR1A and SAR1B by promoting the exchange of guanosine diphosphate (GDP) for guanosine triphosphate (GTP) in these small GTPases that regulates the assembly of the coat protein complex II/COPII in endoplasmic reticulum (ER) to Golgi vesicle-mediated transport. Selectively activates SAR1A and SAR1B by promoting the exchange of guanosine diphosphate (GDP) for guanosine triphosphate (GTP) in these small GTPases .

APPLICATION

To ensure optimal assay performance, AREX recommends conducting reagent titration tailored to each testing system for optimal detection results.

WB	1:500 - 1:2000
----	----------------

*Results are sample-specific. Please refer to your local assay conditions and test parameters for reference.

PRODUCT OVERVIEW

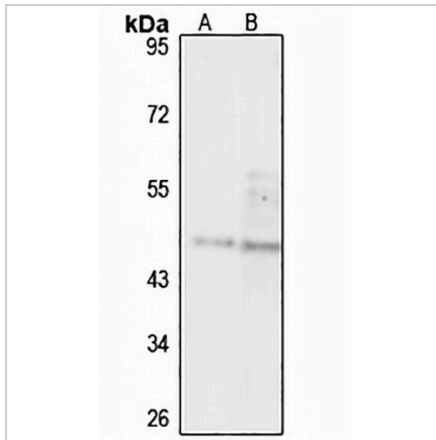
Description	Rabbit polyclonal antibody to PREB
Specificity	Recognizes endogenous levels of PREB protein
Antibody Type	Primary antibody
Immunogen	Recombinant fusion protein of human PREB. The exact sequence is proprietary.
Purification	The antibody was purified by immunogen affinity chromatography.
Molecular Weight	Predicted: 45 kD; Observed: 45 kD
Form/Buffer	Liquid in 0.42% Potassium phosphate, 0.87% Sodium chloride, pH 7.3, 30% glycerol, and 0.01% sodium azide.
Alternative Names	SEC12; Prolactin regulatory element-binding protein; Mammalian guanine nucleotide exchange factor mSec12
Gene Symbol	PREB
Entrez Gene	10113(Human); 50907(Mouse)
SwissProt	Q9HCU5(Human); Q9WUQ2(Mouse)

*AREX continuously optimizes our products. Webpage content may not reflect the latest updates. For inquiries, please contact info@arexbio.com or your local distributor.

*Clone Number, Reactivity, Source/Host and Clonality can be found in the product name and Key Features section above.

DATASHEET**PREB Rabbit Polyclonal Antibody**

CAT. NO. APA16584

DATA

Western blot analysis of PREB expression in A549 (A), mouse heart (B) whole cell lysates.
(Predicted band size: 45 kD; Observed band size: 45 kD)

STORAGE

Store at 4°C short term. For long term storage, store at -20°C, avoiding freeze/thaw cycles.

NOTE

For Research Use Only. Not for diagnostic, therapeutics, prophylactic or in vivo use.