

DATASHEET

PREP Rabbit Polyclonal Antibody

CAT. NO. APA16585

KEY FEATURES

Target	PREP	Source / Host	Rabbit
Reactivity	Human, Mouse, Rat	Clonality	Polyclonal
Applications	WB	Conjugation	Unconjugated
Form / Buffer	Liquid in 0.42% Potassium phosphate, 0.87% Sodium chloride, pH 7.3, 30% glycerol, and 0.01% sodium azide.		Storage at -20°C

BACKGROUND

Cleaves peptide bonds on the C-terminal side of prolyl residues within peptides that are up to approximately 30 amino acids long.

APPLICATION

To ensure optimal assay performance, AREX recommends conducting reagent titration tailored to each testing system for optimal detection results.

WB	1:500 - 1:2000
----	----------------

*Results are sample-specific. Please refer to your local assay conditions and test parameters for reference.

PRODUCT OVERVIEW

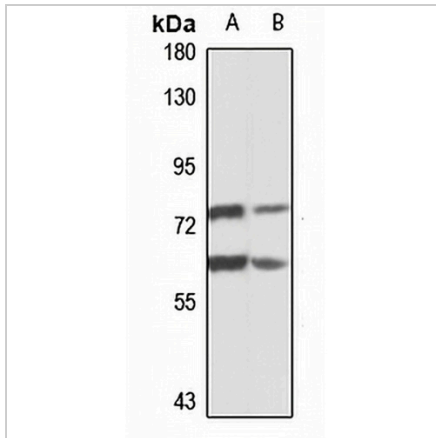
Description	Rabbit polyclonal antibody to PREP
Specificity	Recognizes endogenous levels of PREP protein
Antibody Type	Primary antibody
Immunogen	Recombinant fusion protein of human PREP. The exact sequence is proprietary.
Purification	The antibody was purified by immunogen affinity chromatography.
Molecular Weight	Predicted: 80 kD; Observed: 81 kD
Form/Buffer	Liquid in 0.42% Potassium phosphate, 0.87% Sodium chloride, pH 7.3, 30% glycerol, and 0.01% sodium azide.
Alternative Names	PEP; Prolyl endopeptidase; PE; Post-proline cleaving enzyme
Gene Symbol	PREP
Entrez Gene	5550(Human); 19072(Mouse); 83471(Rat)
SwissProt	P48147(Human); Q9QUR6(Mouse); O70196(Rat)

*AREX continuously optimizes our products. Webpage content may not reflect the latest updates. For inquiries, please contact info@arexbio.com or your local distributor.

*Clone Number, Reactivity, Source/Host and Clonality can be found in the product name and Key Features section above.

DATASHEET**PREP Rabbit Polyclonal Antibody**

CAT. NO. APA16585

DATA

Western blot analysis of PREP expression in K562 (A), mouse liver (B) whole cell lysates.
(Predicted band size: 80 kD; Observed band size: 81 kD)

STORAGE

Store at 4°C short term. For long term storage, store at -20°C, avoiding freeze/thaw cycles.

NOTE

For Research Use Only. Not for diagnostic, therapeutics, prophylactic or in vivo use.