

DATASHEET

PREPL Rabbit Polyclonal Antibody

CAT. NO. APA16586

KEY FEATURES

Target	PREPL	Source / Host	Rabbit
Reactivity	Human, Mouse, Rat	Clonality	Polyclonal
Applications	WB, IF/ICC	Conjugation	Unconjugated
Form / Buffer	Liquid in 0.42% Potassium phosphate, 0.87% Sodium chloride, pH 7.3, 30% glycerol, and 0.01% sodium azide.		Storage at -20°C

BACKGROUND

Serine peptidase whose precise substrate specificity remains unclear . Does not cleave peptides after a arginine or lysine residue . Regulates trans-Golgi network morphology and sorting by regulating the membrane binding of the AP-1 complex . May play a role in the regulation of synaptic vesicle exocytosis .

APPLICATION

To ensure optimal assay performance, AREX recommends conducting reagent titration tailored to each testing system for optimal detection results.

WB	1:500 - 1:2000
IF/ICC	1:50 - 1:200

*Results are sample-specific. Please refer to your local assay conditions and test parameters for reference.

PRODUCT OVERVIEW

Description	Rabbit polyclonal antibody to PREPL
Specificity	Recognizes endogenous levels of PREPL protein
Antibody Type	Primary antibody
Immunogen	Recombinant fusion protein of human PREPL. The exact sequence is proprietary.
Purification	The antibody was purified by immunogen affinity chromatography.
Molecular Weight	Predicted: 73; Observed: 72 kD
Form/Buffer	Liquid in 0.42% Potassium phosphate, 0.87% Sodium chloride, pH 7.3, 30% glycerol, and 0.01% sodium azide.
Alternative Names	KIAA0436; Prolyl endopeptidase-like; Prolylendopeptidase-like
Gene Symbol	PREPL
Entrez Gene	9581(Human); 213760(Mouse); 298771(Rat)
SwissProt	Q4J6C6(Human); Q8C167(Mouse); Q5HZA6(Rat)

*AREX continuously optimizes our products. Webpage content may not reflect the latest updates. For inquiries, please contact info@arexbio.com or your local distributor.

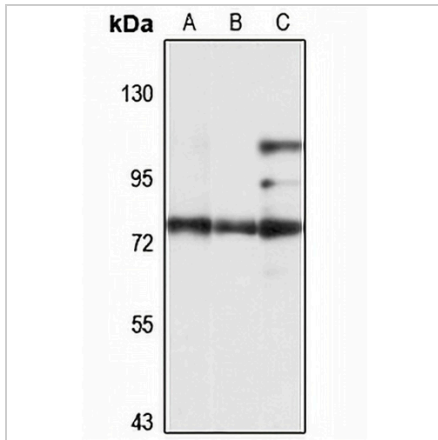
*Clone Number, Reactivity, Source/Host and Clonality can be found in the product name and Key Features section above.

DATASHEET

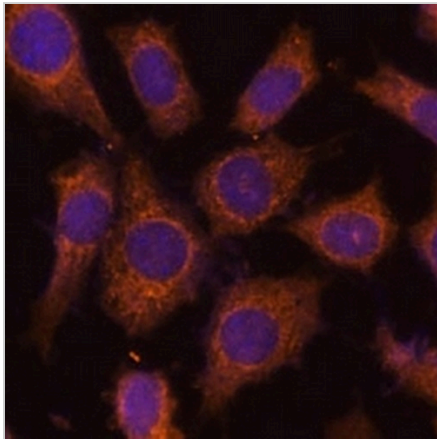
PREPL Rabbit Polyclonal Antibody

CAT. NO. APA16586

DATA



Western blot analysis of PREPL expression in U87MG (A), mouse heart (B), rat brain (C) whole cell lysates. (Predicted band size: 73; 76; 83 kD; Observed band size: 72 kD)



Immunofluorescent analysis of PREPL staining in L929 cells. Formalin-fixed cells were permeabilized with 0.1% Triton X-100 in TBS for 5-10 minutes and blocked with 3% BSA-PBS for 30 minutes at room temperature. Cells were probed with the primary antibody in 3% BSA-PBS and incubated overnight at 4 °C in a humidified chamber. Cells were washed with PBST and incubated with a Alexa Fluor 594-conjugated secondary antibody (red) in PBS at room temperature in the dark.

STORAGE

Store at 4°C short term. For long term storage, store at -20°C, avoiding freeze/thaw cycles.

NOTE

For Research Use Only. Not for diagnostic, therapeutics, prophylactic or in vivo use.