

## DATASHEET

# Lubricin Rabbit Polyclonal Antibody

CAT. NO. APA16587

### KEY FEATURES

Target	Lubricin	Source / Host	Rabbit
Reactivity	Human, Mouse	Clonality	Polyclonal
Applications	WB	Conjugation	Unconjugated
Form / Buffer	Liquid in 0.42% Potassium phosphate, 0.87% Sodium chloride, pH 7.3, 30% glycerol, and 0.01% sodium azide.		Storage at -20°C

### BACKGROUND

Plays a role in boundary lubrication within articulating joints. Prevents protein deposition onto cartilage from synovial fluid by controlling adhesion-dependent synovial growth and inhibiting the adhesion of synovial cells to the cartilage surface.; Isoform F plays a role as a growth factor acting on the primitive cells of both hematopoietic and endothelial cell lineages.

### APPLICATION

To ensure optimal assay performance, AREX recommends conducting reagent titration tailored to each testing system for optimal detection results.

WB	1:500 - 1:2000
----	----------------

\*Results are sample-specific. Please refer to your local assay conditions and test parameters for reference.

### PRODUCT OVERVIEW

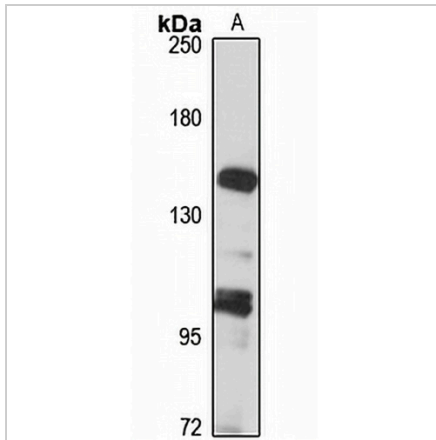
Description	Rabbit polyclonal antibody to Lubricin
Specificity	Recognizes endogenous levels of Lubricin protein
Antibody Type	Primary antibody
Immunogen	Recombinant fusion protein of human Lubricin. The exact sequence is proprietary.
Purification	The antibody was purified by immunogen affinity chromatography.
Molecular Weight	Predicted: 102; Observed: 150 kD
Form/Buffer	Liquid in 0.42% Potassium phosphate, 0.87% Sodium chloride, pH 7.3, 30% glycerol, and 0.01% sodium azide.
Alternative Names	MSF; SZP; Proteoglycan 4; Lubricin; Megakaryocyte-stimulating factor; Superficial zone proteoglycan
Gene Symbol	PRG4
Entrez Gene	10216(Human)
SwissProt	Q92954(Human)

\*AREX continuously optimizes our products. Webpage content may not reflect the latest updates. For inquiries, please contact [info@arexbio.com](mailto:info@arexbio.com) or your local distributor.

\*Clone Number, Reactivity, Source/Host and Clonality can be found in the product name and Key Features section above.

**DATASHEET****Lubricin Rabbit Polyclonal Antibody**

CAT. NO. APA16587

**DATA**

Western blot analysis of Lubricin expression in LO2 (A) whole cell lysates. (Predicted band size: 102; 136; 141; 146; 151 kD; Observed band size: 150 kD)

**STORAGE**

Store at 4°C short term. For long term storage, store at -20°C, avoiding freeze/thaw cycles.

**NOTE**

For Research Use Only. Not for diagnostic, therapeutics, prophylactic or in vivo use.