

DATASHEET

PRICKLE2 Rabbit Polyclonal Antibody

CAT. NO. APA16588

KEY FEATURES

Target	PRICKLE2	Source / Host	Rabbit
Reactivity	Human, Mouse, Rat	Clonality	Polyclonal
Applications	WB, IF/ICC	Conjugation	Unconjugated
Form / Buffer	Liquid in 0.42% Potassium phosphate, 0.87% Sodium chloride, pH 7.3, 30% glycerol, and 0.01% sodium azide.		Storage at -20°C

BACKGROUND

Is involved in the organization and maintenance of axon initial segment (AIS) architecture, likely cooperating with IGSF9B to regulate ANK3/ANKG localization to AIS . By binding to and regulating ANK3/ANKG, it modulates its ability to bundle microtubules, a crucial mechanism for establishing neuronal polarity and AIS formation . During early embryonic development, has a role in blastocyst formation, likely controlling the redistribution of the microtubule network during embryo compaction and the establishment of apical/basal cell polarity .

APPLICATION

To ensure optimal assay performance, AREX recommends conducting reagent titration tailored to each testing system for optimal detection results.

WB	1:500 - 1:2000
IF/ICC	1:50 - 1:200

*Results are sample-specific. Please refer to your local assay conditions and test parameters for reference.

PRODUCT OVERVIEW

Description	Rabbit polyclonal antibody to PRICKLE2
Specificity	Recognizes endogenous levels of PRICKLE2 protein
Antibody Type	Primary antibody
Immunogen	Recombinant fusion protein of human PRICKLE2. The exact sequence is proprietary.
Purification	The antibody was purified by immunogen affinity chromatography.
Molecular Weight	Predicted: 95 kD; Observed: 126 kD
Form/Buffer	Liquid in 0.42% Potassium phosphate, 0.87% Sodium chloride, pH 7.3, 30% glycerol, and 0.01% sodium azide.
Alternative Names	Prickle-like protein 2
Gene Symbol	PRICKLE2
Entrez Gene	166336(Human); 243548(Mouse)
SwissProt	Q7Z3G6(Human); Q80Y24(Mouse)

*AREX continuously optimizes our products. Webpage content may not reflect the latest updates. For inquiries, please contact info@arexbio.com or your local distributor.

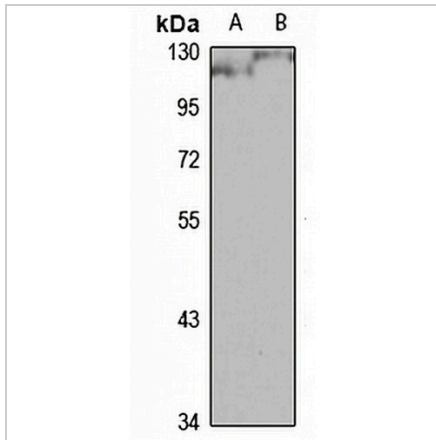
*Clone Number, Reactivity, Source/Host and Clonality can be found in the product name and Key Features section above.

DATASHEET

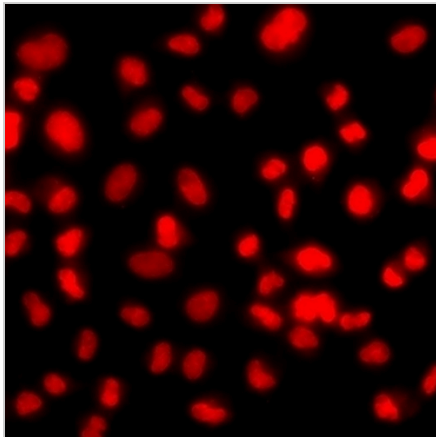
PRICKLE2 Rabbit Polyclonal Antibody

CAT. NO. APA16588

DATA



Western blot analysis of PRICKLE2 expression in mouse brain (A), rat brain (B) whole cell lysates. (Predicted band size: 95 kD; Observed band size: 126 kD)



Immunofluorescent analysis of PRICKLE2 staining in A549 cells. Formalin-fixed cells were permeabilized with 0.1% Triton X-100 in TBS for 5-10 minutes and blocked with 3% BSA-PBS for 30 minutes at room temperature. Cells were probed with the primary antibody in 3% BSA-PBS and incubated overnight at 4 °C in a humidified chamber. Cells were washed with PBST and incubated with a Alexa Fluor 594-conjugated secondary antibody (red) in PBS at room temperature in the dark.

STORAGE

Store at 4°C short term. For long term storage, store at -20°C, avoiding freeze/thaw cycles.

NOTE

For Research Use Only. Not for diagnostic, therapeutics, prophylactic or in vivo use.