

**DATASHEET**

**PKA C alpha Rabbit Polyclonal Antibody**

CAT. NO. APA16590

**KEY FEATURES**

|               |   |               |                     |
|---------------|---|---------------|---------------------|
| Target        | PKA C alpha   | Source / Host | Rabbit              |
| Reactivity    | Human   | Clonality     | Polyclonal          |
| Applications  | WB  | Conjugation   | Unconjugated        |
| Form / Buffer | Liquid in 0.42% Potassium phosphate, 0.87% Sodium chloride, pH 7.3, 30% glycerol, and 0.01% sodium azide. |               | Storage<br>at -20°C |

**BACKGROUND**

Phosphorylates a large number of substrates in the cytoplasm and the nucleus . Phosphorylates CDC25B, ABL1, NFKB1, CLDN3, histone H1.4 (H1-4), PSMC5/RPT6, PJA2, RYR2, RORA, SOX9, UHRF1 and VASP . Regulates the abundance of compartmentalized pools of its regulatory subunits through phosphorylation of PJA2 which binds and ubiquitinates these subunits, leading to their subsequent proteolysis . RORA is activated by phosphorylation . Required for glucose-mediated adipogenic differentiation increase and osteogenic differentiation inhibition from osteoblasts . Involved in chondrogenesis by mediating phosphorylation of SOX9 .

**APPLICATION**

To ensure optimal assay performance, AREX recommends conducting reagent titration tailored to each testing system for optimal detection results.

|    |                |
|----|----------------|
| WB | 1:500 - 1:1000 |
|----|----------------|

\*Results are sample-specific. Please refer to your local assay conditions and test parameters for reference.

**PRODUCT OVERVIEW**

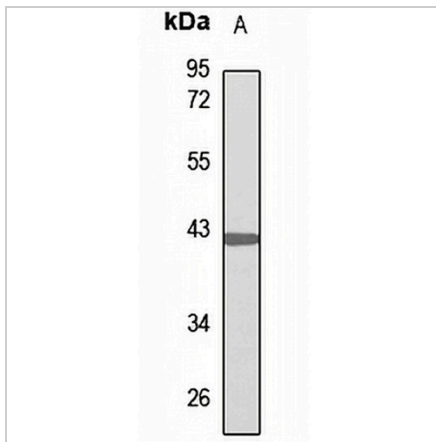
|                   |   |
|-------------------|---|
| Description       | Rabbit polyclonal antibody to PKA C alpha   |
| Specificity       | Recognizes endogenous levels of PKA C alpha protein   |
| Antibody Type     | Primary antibody  |
| Immunogen         | KLH-conjugated synthetic peptide of human PKA C alpha. The exact sequence is proprietary.                 |
| Purification      | The antibody was purified by immunogen affinity chromatography.   |
| Molecular Weight  | Predicted: 39; Observed: 40 kD  |
| Form/Buffer       | Liquid in 0.42% Potassium phosphate, 0.87% Sodium chloride, pH 7.3, 30% glycerol, and 0.01% sodium azide. |
| Alternative Names | PKACA; cAMP-dependent protein kinase catalytic subunit alpha; PKA C-alpha                                 |
| Gene Symbol       | PRKACA  |
| Entrez Gene       | 5566(Human)   |
| SwissProt         | P17612(Human)   |

\*AREX continuously optimizes our products. Webpage content may not reflect the latest updates. For inquiries, please contact [info@arexbio.com](mailto:info@arexbio.com) or your local distributor.

\*Clone Number, Reactivity, Source/Host and Clonality can be found in the product name and Key Features section above.

**DATASHEET****PKA C alpha Rabbit Polyclonal Antibody**

CAT. NO. APA16590

**DATA**

Western blot analysis of PKA C alpha expression in HeLa (A) whole cell lysates. (Predicted band size: 39; 40 kD; Observed band size: 40 kD)

**STORAGE**

Store at 4°C short term. For long term storage, store at -20°C, avoiding freeze/thaw cycles.

**NOTE**

For Research Use Only. Not for diagnostic, therapeutics, prophylactic or in vivo use.