

## DATASHEET

# Prokineticin-2 Rabbit Polyclonal Antibody

CAT. NO. APA16595

### KEY FEATURES

|               |   |               |                     |
|---------------|---|---------------|---------------------|
| Target        | Prokineticin-2  | Source / Host | Rabbit              |
| Reactivity    | Human, Mouse, Rat   | Clonality     | Polyclonal          |
| Applications  | WB, IHC, IF/ICC   | Conjugation   | Unconjugated        |
| Form / Buffer | Liquid in 0.42% Potassium phosphate, 0.87% Sodium chloride, pH 7.3, 30% glycerol, and 0.01% sodium azide. |               | Storage<br>at -20°C |

### BACKGROUND

May function as an output molecule from the suprachiasmatic nucleus (SCN) that transmits behavioral circadian rhythm. May also function locally within the SCN to synchronize output. Potently contracts gastrointestinal (GI) smooth muscle.

### APPLICATION

To ensure optimal assay performance, AREX recommends conducting reagent titration tailored to each testing system for optimal detection results.

|        |                |
|--------|----------------|
| WB     | 1:500 - 1:2000 |
| IHC    | 1:50 - 1:200   |
| IF/ICC | 1:50 - 1:200   |

\*Results are sample-specific. Please refer to your local assay conditions and test parameters for reference.

### PRODUCT OVERVIEW

|                   |   |
|-------------------|---|
| Description       | Rabbit polyclonal antibody to Prokineticin-2  |
| Specificity       | Recognizes endogenous levels of Prokineticin-2 protein  |
| Antibody Type     | Primary antibody  |
| Immunogen         | Recombinant fusion protein of human Prokineticin-2. The exact sequence is proprietary.                    |
| Purification      | The antibody was purified by immunogen affinity chromatography.   |
| Molecular Weight  | Predicted: 11; Observed: 17 kD  |
| Form/Buffer       | Liquid in 0.42% Potassium phosphate, 0.87% Sodium chloride, pH 7.3, 30% glycerol, and 0.01% sodium azide. |
| Alternative Names | BV8; Prokineticin-2; PK2; Protein Bv8 homolog   |
| Gene Symbol       | PROK2   |
| Entrez Gene       | 60675(Human); 50501(Mouse); 192206(Rat)   |
| SwissProt         | Q9HC23(Human); Q9QXU7(Mouse); Q8R413(Rat)   |

\*AREX continuously optimizes our products. Webpage content may not reflect the latest updates. For inquiries, please contact [info@arexbio.com](mailto:info@arexbio.com) or your local distributor.

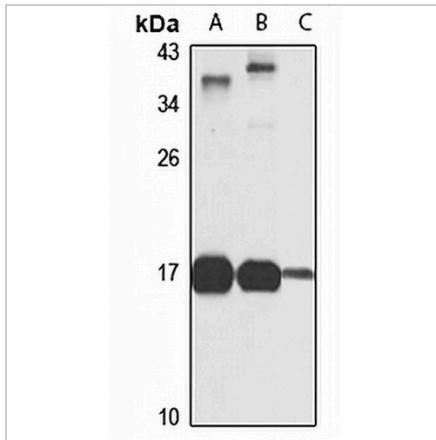
\*Clone Number, Reactivity, Source/Host and Clonality can be found in the product name and Key Features section above.

**DATASHEET**

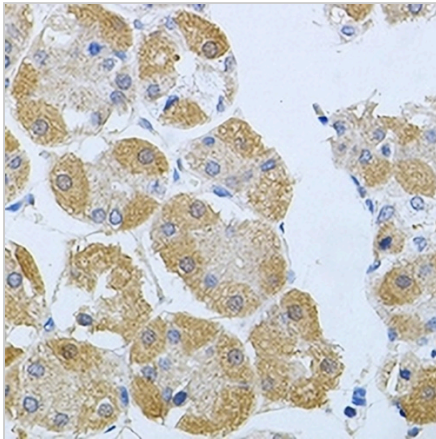
**Prokineticin-2 Rabbit Polyclonal Antibody**

CAT. NO. APA16595

**DATA**



Western blot analysis of Prokineticin-2 expression in HepG2 (A), mouse liver (B), rat thymus (C) whole cell lysates. (Predicted band size: 11; 14 kD; Observed band size: 17 kD)



Immunohistochemical analysis of Prokineticin-2 staining in human stomach formalin fixed paraffin embedded tissue section. The section was pre-treated using heat mediated antigen retrieval with sodium citrate buffer (pH 6.0). The section was then incubated with the antibody at room temperature and detected using an HRP conjugated compact polymer system. DAB was used as the chromogen. The section was then counterstained with haematoxylin and mounted with DPX.

**STORAGE**

Store at 4°C short term. For long term storage, store at -20°C, avoiding freeze/thaw cycles.

**NOTE**

For Research Use Only. Not for diagnostic, therapeutics, prophylactic or in vivo use.