

DATASHEET

PSD2 Rabbit Polyclonal Antibody

CAT. NO. APA16606

KEY FEATURES

Target	PSD2	Source / Host	Rabbit
Reactivity	Human, Mouse, Rat	Clonality	Polyclonal
Applications	WB	Conjugation	Unconjugated
Form / Buffer	Liquid in 0.42% Potassium phosphate, 0.87% Sodium chloride, pH 7.3, 30% glycerol, and 0.01% sodium azide.		Storage at -20°C

BACKGROUND

PH and SEC7 domain-containing protein 2 (PSD2), also known as Exchange factor for ADP-ribosylation factor guanine nucleotide factor 6 C, Exchange factor for ARF6 C, Pleckstrin homology and SEC7 domain-containing protein 2. Belongs to the PSD family
Subcellular location: Cell membrane; Cell projection, ruffle membrane; Cleavage furrow

APPLICATION

To ensure optimal assay performance, AREX recommends conducting reagent titration tailored to each testing system for optimal detection results.

WB	1:500 - 1:2000
----	----------------

*Results are sample-specific. Please refer to your local assay conditions and test parameters for reference.

PRODUCT OVERVIEW

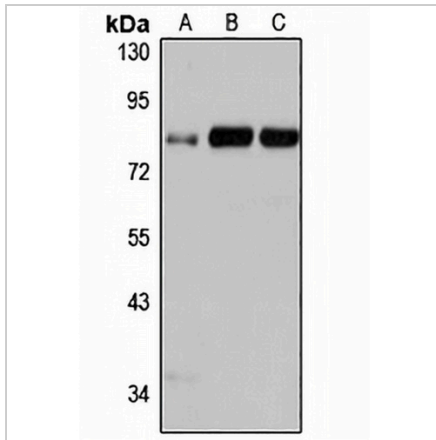
Description	Rabbit polyclonal antibody to PSD2
Specificity	Recognizes endogenous levels of PSD2 protein
Antibody Type	Primary antibody
Immunogen	Recombinant fusion protein of human PSD2. The exact sequence is proprietary.
Purification	The antibody was purified by immunogen affinity chromatography.
Molecular Weight	Predicted: 84 kD; Observed: 85 kD
Form/Buffer	Liquid in 0.42% Potassium phosphate, 0.87% Sodium chloride, pH 7.3, 30% glycerol, and 0.01% sodium azide.
Alternative Names	PH and SEC7 domain-containing protein 2; Pleckstrin homology and SEC7 domain-containing protein 2
Gene Symbol	PSD2
Entrez Gene	84249(Human); 74002(Mouse)
SwissProt	Q9BQI7(Human); Q6P1I6(Mouse)

*AREX continuously optimizes our products. Webpage content may not reflect the latest updates. For inquiries, please contact info@arexbio.com or your local distributor.

*Clone Number, Reactivity, Source/Host and Clonality can be found in the product name and Key Features section above.

DATASHEET**PSD2 Rabbit Polyclonal Antibody**

CAT. NO. APA16606

DATA

Western blot analysis of PSD2 expression in U251MG (A), mouse brain (B), rat brain (C) whole cell lysates. (Predicted band size: 84 kD; Observed band size: 85 kD)

STORAGE

Store at 4°C short term. For long term storage, store at -20°C, avoiding freeze/thaw cycles.

NOTE

For Research Use Only. Not for diagnostic, therapeutics, prophylactic or in vivo use.