

DATASHEET

PSMA8 Rabbit Polyclonal Antibody

CAT. NO. APA16608

KEY FEATURES

Target	PSMA8	Source / Host	Rabbit
Reactivity	Human, Mouse, Rat	Clonality	Polyclonal
Applications	WB	Conjugation	Unconjugated
Form / Buffer	Liquid in 0.42% Potassium phosphate, 0.87% Sodium chloride, pH 7.3, 30% glycerol, and 0.01% sodium azide.		Storage at -20°C

BACKGROUND

Component of the spermatoproteasome, a proteasome specifically found in testis that promotes acetylation-dependent degradation of histones, thereby participating actively to the exchange of histones during spermatogenesis. The proteasome is a protein complex that degrades unneeded or damaged proteins by proteolysis, a chemical reaction that breaks peptide bonds. Required for 20S core proteasome assembly, essential for the degradation of meiotic proteins RAD51 and RPA1 at late prophase I and the progression of meiosis I during spermatogenesis. Localizes to the synaptonemal complex, a 'zipper'-like structure that holds homologous chromosome pairs in synapsis during meiotic prophase I.

APPLICATION

To ensure optimal assay performance, AREX recommends conducting reagent titration tailored to each testing system for optimal detection results.

WB	1:500 - 1:2000
----	----------------

*Results are sample-specific. Please refer to your local assay conditions and test parameters for reference.

PRODUCT OVERVIEW

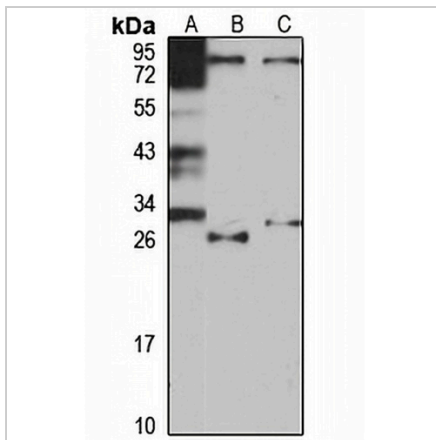
Description	Rabbit polyclonal antibody to PSMA8
Specificity	Recognizes endogenous levels of PSMA8 protein
Antibody Type	Primary antibody
Immunogen	Recombinant fusion protein of human PSMA8. The exact sequence is proprietary.
Purification	The antibody was purified by immunogen affinity chromatography.
Molecular Weight	Predicted: 23; Observed: 28 kD
Form/Buffer	Liquid in 0.42% Potassium phosphate, 0.87% Sodium chloride, pH 7.3, 30% glycerol, and 0.01% sodium azide.
Alternative Names	PSMA7L; Proteasome subunit alpha type-7-like
Gene Symbol	PSMA8
Entrez Gene	143471(Human); 73677(Mouse)
SwissProt	Q8TAA3(Human); Q9CWH6(Mouse)

*AREX continuously optimizes our products. Webpage content may not reflect the latest updates. For inquiries, please contact info@arexbio.com or your local distributor.

*Clone Number, Reactivity, Source/Host and Clonality can be found in the product name and Key Features section above.

DATASHEET**PSMA8 Rabbit Polyclonal Antibody**

CAT. NO. APA16608

DATA

Western blot analysis of PSMA8 expression in K562 (A), mouse testis (B), rat thymus (C) whole cell lysates. (Predicted band size: 23; 27; 28 kD; Observed band size: 28 kD)

STORAGE

Store at 4°C short term. For long term storage, store at -20°C, avoiding freeze/thaw cycles.

NOTE

For Research Use Only. Not for diagnostic, therapeutics, prophylactic or in vivo use.