

DATASHEET

PSMD5 Rabbit Polyclonal Antibody

CAT. NO. APA16613

KEY FEATURES

Target	PSMD5	Source / Host	Rabbit
Reactivity	Human, Mouse, Rat	Clonality	Polyclonal
Applications	WB, IHC	Conjugation	Unconjugated
Form / Buffer	Liquid in 0.42% Potassium phosphate, 0.87% Sodium chloride, pH 7.3, 30% glycerol, and 0.01% sodium azide.		Storage at -20°C

BACKGROUND

Acts as a chaperone during the assembly of the 26S proteasome, specifically of the base subcomplex of the PA700/19S regulatory complex (RC). In the initial step of the base subcomplex assembly is part of an intermediate PSMD5:PSMC2:PSMC1:PSMD2 module which probably assembles with a PSMD10:PSMC4:PSMC5:PAAF1 module followed by dissociation of PSMD5.

APPLICATION

To ensure optimal assay performance, AREX recommends conducting reagent titration tailored to each testing system for optimal detection results.

WB	1:500 - 1:2000
IHC	1:50 - 1:200

*Results are sample-specific. Please refer to your local assay conditions and test parameters for reference.

PRODUCT OVERVIEW

Description	Rabbit polyclonal antibody to PSMD5
Specificity	Recognizes endogenous levels of PSMD5 protein
Antibody Type	Primary antibody
Immunogen	Recombinant fusion protein of human PSMD5. The exact sequence is proprietary.
Purification	The antibody was purified by immunogen affinity chromatography.
Molecular Weight	Predicted: 51; Observed: 51; 56 kD
Form/Buffer	Liquid in 0.42% Potassium phosphate, 0.87% Sodium chloride, pH 7.3, 30% glycerol, and 0.01% sodium azide.
Alternative Names	KIAA0072; 26S proteasome non-ATPase regulatory subunit 5; 26S protease subunit S5 basic; 26S proteasome subunit S5B
Gene Symbol	PSMD5
Entrez Gene	5711(Human); 66998(Mouse)
SwissProt	Q16401(Human); Q8BJY1(Mouse)

*AREX continuously optimizes our products. Webpage content may not reflect the latest updates. For inquiries, please contact info@arexbio.com or your local distributor.

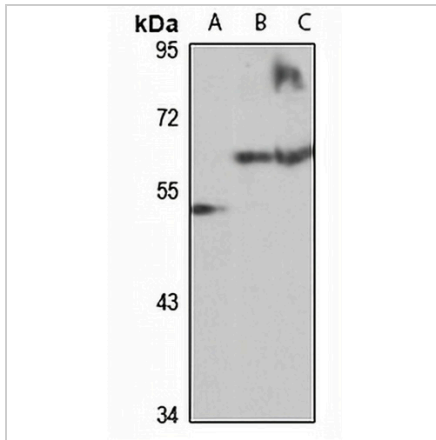
*Clone Number, Reactivity, Source/Host and Clonality can be found in the product name and Key Features section above.

DATASHEET

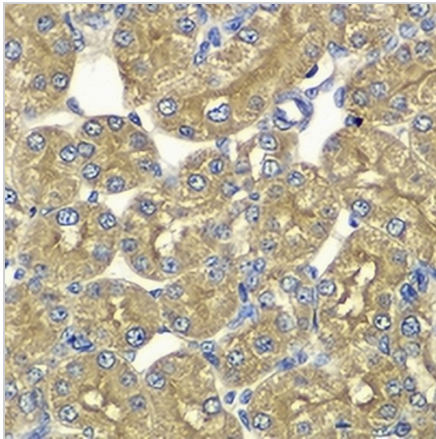
PSMD5 Rabbit Polyclonal Antibody

CAT. NO. APA16613

DATA



Western blot analysis of PSMD5 expression in HeLa (A), mouse liver (B), rat liver (C) whole cell lysates. (Predicted band size: 51; 56 kD; Observed band size: 51; 56 kD)



Immunohistochemical analysis of PSMD5 staining in rat kidney formalin fixed paraffin embedded tissue section. The section was pre-treated using heat mediated antigen retrieval with sodium citrate buffer (pH 6.0). The section was then incubated with the antibody at room temperature and detected using an HRP conjugated compact polymer system. DAB was used as the chromogen. The section was then counterstained with haematoxylin and mounted with DPX.

STORAGE

Store at 4°C short term. For long term storage, store at -20°C, avoiding freeze/thaw cycles.

NOTE

For Research Use Only. Not for diagnostic, therapeutics, prophylactic or in vivo use.