

DATASHEET

PSMG2 Rabbit Polyclonal Antibody

CAT. NO. APA16616

KEY FEATURES

Target	PSMG2	Source / Host	Rabbit
Reactivity	Human, Mouse	Clonality	Polyclonal
Applications	WB	Conjugation	Unconjugated
Form / Buffer	Liquid in 0.42% Potassium phosphate, 0.87% Sodium chloride, pH 7.3, 30% glycerol, and 0.01% sodium azide.		Storage at -20°C

BACKGROUND

Chaperone protein which promotes assembly of the 20S proteasome as part of a heterodimer with PSMG1. The PSMG1-PSMG2 heterodimer binds to the PSMA5 and PSMA7 proteasome subunits, promotes assembly of the proteasome alpha subunits into the heteroheptameric alpha ring and prevents alpha ring dimerization.

APPLICATION

To ensure optimal assay performance, AREX recommends conducting reagent titration tailored to each testing system for optimal detection results.

WB	1:500 - 1:2000
----	----------------

*Results are sample-specific. Please refer to your local assay conditions and test parameters for reference.

PRODUCT OVERVIEW

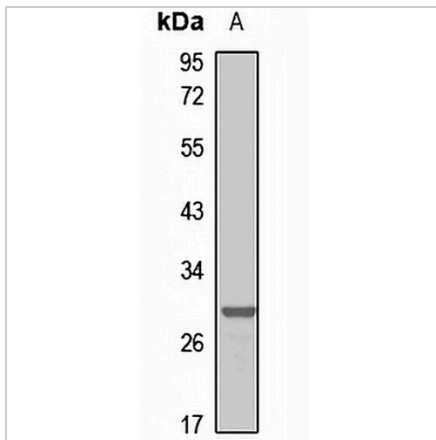
Description	Rabbit polyclonal antibody to PSMG2
Specificity	Recognizes endogenous levels of PSMG2 protein
Antibody Type	Primary antibody
Immunogen	Recombinant fusion protein of human PSMG2. The exact sequence is proprietary.
Purification	The antibody was purified by immunogen affinity chromatography.
Molecular Weight	Predicted: 26; Observed: 29 kD
Form/Buffer	Liquid in 0.42% Potassium phosphate, 0.87% Sodium chloride, pH 7.3, 30% glycerol, and 0.01% sodium azide.
Alternative Names	HCCA3; PAC2; TNFSF5IP1; Proteasome assembly chaperone 2; PAC-2; Hepatocellular carcinoma-susceptibility protein 3; Tumor necrosis factor superfamily member 5-induced protein 1
Gene Symbol	PSMG2
Entrez Gene	56984(Human); 107047(Mouse)
SwissProt	Q969U7(Human); Q9EST4(Mouse)

*AREX continuously optimizes our products. Webpage content may not reflect the latest updates. For inquiries, please contact info@arexbio.com or your local distributor.

*Clone Number, Reactivity, Source/Host and Clonality can be found in the product name and Key Features section above.

DATASHEET**PSMG2 Rabbit Polyclonal Antibody**

CAT. NO. APA16616

DATA

Western blot analysis of PSMG2 expression in HEK293T (A) whole cell lysates. (Predicted band size: 26; 29 kD; Observed band size: 29 kD)

STORAGE

Store at 4°C short term. For long term storage, store at -20°C, avoiding freeze/thaw cycles.

NOTE

For Research Use Only. Not for diagnostic, therapeutics, prophylactic or in vivo use.