

**DATASHEET**

**PSPC1 Rabbit Polyclonal Antibody**

CAT. NO. APA16617

**KEY FEATURES**

Target	PSPC1	Source / Host	Rabbit
Reactivity	Human, Mouse, Rat	Clonality	Polyclonal
Applications	WB, IP	Conjugation	Unconjugated
Form / Buffer	Liquid in 0.42% Potassium phosphate, 0.87% Sodium chloride, pH 7.3, 30% glycerol, and 0.01% sodium azide.		Storage at -20°C

**BACKGROUND**

RNA-binding protein required for the formation of nuclear paraspeckles . Binds to poly(A), poly(G) and poly(U) RNA homopolymers . Regulates, cooperatively with NONO and SFPQ, androgen receptor-mediated gene transcription activity in Sertoli cell line . Regulates the circadian clock by repressing the transcriptional activator activity of the CLOCK-BMAL1 heterodimer . Plays a role in the regulation of DNA virus-mediated innate immune response by assembling into the HDP-RNP complex, a complex that serves as a platform for IRF3 phosphorylation and subsequent innate immune response activation through the cGAS-STING pathway .

**APPLICATION**

To ensure optimal assay performance, AREX recommends conducting reagent titration tailored to each testing system for optimal detection results.

WB	1:500 - 1:2000
IP	1:20 - 1:100

\*Results are sample-specific. Please refer to your local assay conditions and test parameters for reference.

**PRODUCT OVERVIEW**

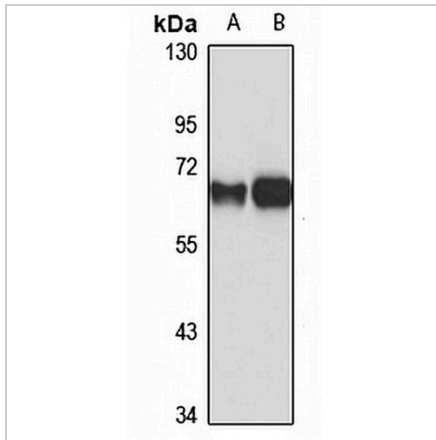
Description	Rabbit polyclonal antibody to PSPC1
Specificity	Recognizes endogenous levels of PSPC1 protein
Antibody Type	Primary antibody
Immunogen	Recombinant fusion protein of human PSPC1. The exact sequence is proprietary.
Purification	The antibody was purified by immunogen affinity chromatography.
Molecular Weight	Predicted: 45; Observed: 65 kD
Form/Buffer	Liquid in 0.42% Potassium phosphate, 0.87% Sodium chloride, pH 7.3, 30% glycerol, and 0.01% sodium azide.
Alternative Names	PSP1; Paraspeckle component 1; Paraspeckle protein 1
Gene Symbol	PSPC1
Entrez Gene	55269(Human); 66645(Mouse)
SwissProt	Q8WXF1(Human); Q8R326(Mouse)

\*AREX continuously optimizes our products. Webpage content may not reflect the latest updates. For inquiries, please contact [info@arexbio.com](mailto:info@arexbio.com) or your local distributor.

\*Clone Number, Reactivity, Source/Host and Clonality can be found in the product name and Key Features section above.

**DATASHEET****PSPC1 Rabbit Polyclonal Antibody**

CAT. NO. APA16617

**DATA**

Western blot analysis of PSPC1 expression in U87MG (A), mouse brain (B) whole cell lysates. (Predicted band size: 45; 58 kD; Observed band size: 65 kD)

**STORAGE**

Store at 4°C short term. For long term storage, store at -20°C, avoiding freeze/thaw cycles.

**NOTE**

For Research Use Only. Not for diagnostic, therapeutics, prophylactic or in vivo use.