

DATASHEET

PSS-1 Rabbit Polyclonal Antibody

CAT. NO. APA16619

KEY FEATURES

Target	PSS-1	Source / Host	Rabbit
Reactivity	Human	Clonality	Polyclonal
Applications	WB	Conjugation	Unconjugated
Form / Buffer	Liquid in 0.42% Potassium phosphate, 0.87% Sodium chloride, pH 7.3, 30% glycerol, and 0.01% sodium azide.		Storage at -20°C

BACKGROUND

Catalyzes a base-exchange reaction in which the polar head group of phosphatidylethanolamine (PE) or phosphatidylcholine (PC) is replaced by L-serine or phosphatidylcholine (PC) is replaced by L-serine. Catalyzes mainly the conversion of phosphatidylcholine. Also converts, in vitro and to a lesser extent, phosphatidylethanolamine.

APPLICATION

To ensure optimal assay performance, AREX recommends conducting reagent titration tailored to each testing system for optimal detection results.

WB	1:500 - 1:2000
----	----------------

*Results are sample-specific. Please refer to your local assay conditions and test parameters for reference.

PRODUCT OVERVIEW

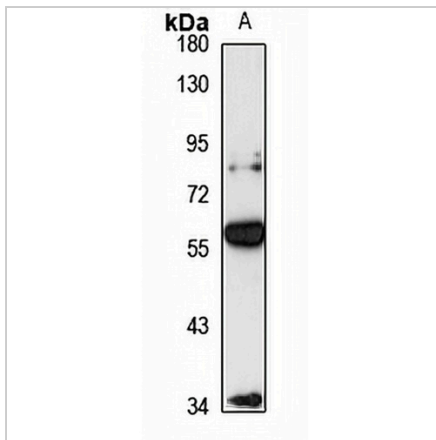
Description	Rabbit polyclonal antibody to PSS-1
Specificity	Recognizes endogenous levels of PSS-1 protein
Antibody Type	Primary antibody
Immunogen	Recombinant fusion protein of human PSS-1. The exact sequence is proprietary.
Purification	The antibody was purified by immunogen affinity chromatography.
Molecular Weight	Predicted: 56 kD; Observed: 55 kD
Form/Buffer	Liquid in 0.42% Potassium phosphate, 0.87% Sodium chloride, pH 7.3, 30% glycerol, and 0.01% sodium azide.
Alternative Names	KIAA0024; PSSA; Phosphatidylserine synthase 1; PSS-1; PtdSer synthase 1; Serine-exchange enzyme I
Gene Symbol	PTDSS1
Entrez Gene	9791(Human)
SwissProt	P48651(Human)

*AREX continuously optimizes our products. Webpage content may not reflect the latest updates. For inquiries, please contact info@arexbio.com or your local distributor.

*Clone Number, Reactivity, Source/Host and Clonality can be found in the product name and Key Features section above.

DATASHEET**PSS-1 Rabbit Polyclonal Antibody**

CAT. NO. APA16619

DATA

Western blot analysis of PSS-1 expression in Raji (A) whole cell lysates. (Predicted band size: 56 kD; Observed band size: 55 kD)

STORAGE

Store at 4°C short term. For long term storage, store at -20°C, avoiding freeze/thaw cycles.

NOTE

For Research Use Only. Not for diagnostic, therapeutics, prophylactic or in vivo use.