

DATASHEET

PTH2R Rabbit Polyclonal Antibody

CAT. NO. APA16621

KEY FEATURES

Target	PTH2R	Source / Host	Rabbit
Reactivity	Human, Mouse, Rat	Clonality	Polyclonal
Applications	WB	Conjugation	Unconjugated
Form / Buffer	Liquid in 0.42% Potassium phosphate, 0.87% Sodium chloride, pH 7.3, 30% glycerol, and 0.01% sodium azide.		Storage at -20°C

BACKGROUND

This is a specific receptor for parathyroid hormone. The activity of this receptor is mediated by G proteins which activate adenylyl cyclase. PTH2R may be responsible for PTH effects in a number of physiological systems. It may play a significant role in pancreatic function. PTH2R presence in neurons indicates that it may function as a neurotransmitter receptor .

APPLICATION

To ensure optimal assay performance, AREX recommends conducting reagent titration tailored to each testing system for optimal detection results.

WB	1:500 - 1:2000
----	----------------

*Results are sample-specific. Please refer to your local assay conditions and test parameters for reference.

PRODUCT OVERVIEW

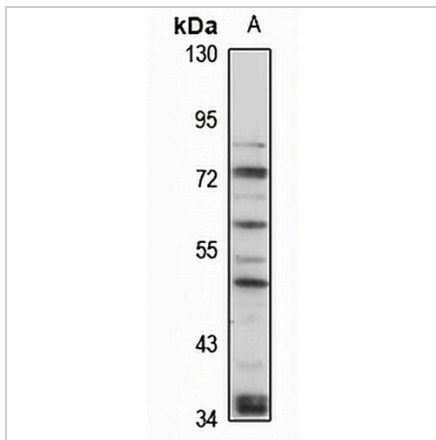
Description	Rabbit polyclonal antibody to PTH2R
Specificity	Recognizes endogenous levels of PTH2R protein
Antibody Type	Primary antibody
Immunogen	Recombinant fusion protein of human PTH2R. The exact sequence is proprietary.
Purification	The antibody was purified by immunogen affinity chromatography.
Molecular Weight	Predicted: 62 kD; Observed: 62 kD
Form/Buffer	Liquid in 0.42% Potassium phosphate, 0.87% Sodium chloride, pH 7.3, 30% glycerol, and 0.01% sodium azide.
Alternative Names	PTHR2; Parathyroid hormone 2 receptor; PTH2 receptor
Gene Symbol	PTH2R
Entrez Gene	5746(Human); 213527(Mouse); 81753(Rat)
SwissProt	P49190(Human); Q91V95(Mouse); P70555(Rat)

*AREX continuously optimizes our products. Webpage content may not reflect the latest updates. For inquiries, please contact info@arexbio.com or your local distributor.

*Clone Number, Reactivity, Source/Host and Clonality can be found in the product name and Key Features section above.

DATASHEET**PTH2R Rabbit Polyclonal Antibody**

CAT. NO. APA16621

DATA

Western blot analysis of PTH2R expression in LO2 (A) whole cell lysates. (Predicted band size: 62 kD; Observed band size: 62 kD)

STORAGE

Store at 4°C short term. For long term storage, store at -20°C, avoiding freeze/thaw cycles.

NOTE

For Research Use Only. Not for diagnostic, therapeutics, prophylactic or in vivo use.