

**DATASHEET**

**PRL1 Rabbit Polyclonal Antibody**

CAT. NO. APA16622

**KEY FEATURES**

Target	PRL1	Source / Host	Rabbit
Reactivity	Human, Mouse, Rat	Clonality	Polyclonal
Applications	WB	Conjugation	Unconjugated
Form / Buffer	Liquid in 0.42% Potassium phosphate, 0.87% Sodium chloride, pH 7.3, 30% glycerol, and 0.01% sodium azide.		Storage at -20°C

**BACKGROUND**

Protein tyrosine phosphatase which stimulates progression from G1 into S phase during mitosis. May play a role in the development and maintenance of differentiating epithelial tissues. Enhances cell proliferation, cell motility and invasive activity, and promotes cancer metastasis.

**APPLICATION**

To ensure optimal assay performance, AREX recommends conducting reagent titration tailored to each testing system for optimal detection results.

WB	1:500 - 1:2000
----	----------------

\*Results are sample-specific. Please refer to your local assay conditions and test parameters for reference.

**PRODUCT OVERVIEW**

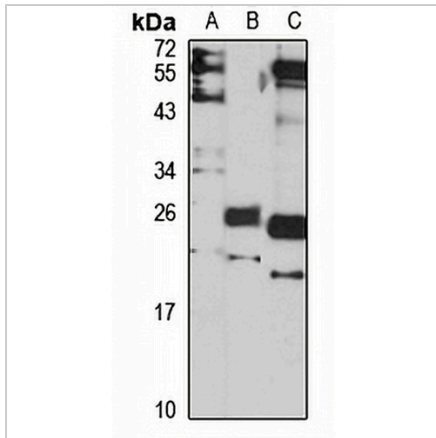
Description	Rabbit polyclonal antibody to PRL1
Specificity	Recognizes endogenous levels of PRL1 protein
Antibody Type	Primary antibody
Immunogen	Recombinant fusion protein of human PRL1. The exact sequence is proprietary.
Purification	The antibody was purified by immunogen affinity chromatography.
Molecular Weight	Predicted: 19 kD; Observed: 20 kD
Form/Buffer	Liquid in 0.42% Potassium phosphate, 0.87% Sodium chloride, pH 7.3, 30% glycerol, and 0.01% sodium azide.
Alternative Names	PRL1; PTPCAAX1; Protein tyrosine phosphatase type IVA 1; PTP(CAAXI); Protein-tyrosine phosphatase 4a1; Protein-tyrosine phosphatase of regenerating liver 1; PRL-1
Gene Symbol	PTP4A1
Entrez Gene	7803(Human); 102643131; 19243(Mouse); 100365697; 102547074; 29463(Rat)
SwissProt	Q93096(Human); Q63739(Mouse); Q78EG7(Rat)

\*AREX continuously optimizes our products. Webpage content may not reflect the latest updates. For inquiries, please contact [info@arexbio.com](mailto:info@arexbio.com) or your local distributor.

\*Clone Number, Reactivity, Source/Host and Clonality can be found in the product name and Key Features section above.

**DATASHEET****PRL1 Rabbit Polyclonal Antibody**

CAT. NO. APA16622

**DATA**

Western blot analysis of PRL1 expression in A549 (A), mouse liver (B), rat liver (C) whole cell lysates. (Predicted band size: 19 kD; Observed band size: 20 kD)

**STORAGE**

Store at 4°C short term. For long term storage, store at -20°C, avoiding freeze/thaw cycles.

**NOTE**

For Research Use Only. Not for diagnostic, therapeutics, prophylactic or in vivo use.