

DATASHEET

PTPase-MEG1 Rabbit Polyclonal Antibody

CAT. NO. APA16626

KEY FEATURES

Target	PTPase-MEG1	Source / Host	Rabbit
Reactivity	Human, Mouse, Rat	Clonality	Polyclonal
Applications	WB, IHC	Conjugation	Unconjugated
Form / Buffer	Liquid in 0.42% Potassium phosphate, 0.87% Sodium chloride, pH 7.3, 30% glycerol, and 0.01% sodium azide.		Storage at-20°C

BACKGROUND

Phosphatase that plays a role in immunity, learning, synaptic plasticity or cell homeostasis . Regulates neuronal cell homeostasis by protecting neurons against apoptosis . Negatively regulates TLR4-induced interferon beta production by dephosphorylating adapter TICAM2 and inhibiting subsequent TRAM-TRIF interaction . Also dephosphorylates the immunoreceptor tyrosine-based activation motifs/ITAMs of the TCR zeta subunit and thereby negatively regulates TCR-mediated signaling pathway . May act at junctions between the membrane and the cytoskeleton.

APPLICATION

To ensure optimal assay performance, AREX recommends conducting reagent titration tailored to each testing system for optimal detection results.

WB	1:500 - 1:2000
IHC	1:50 - 1:200

*Results are sample-specific. Please refer to your local assay conditions and test parameters for reference.

PRODUCT OVERVIEW

Description	Rabbit polyclonal antibody to PTPase-MEG1
Specificity	Recognizes endogenous levels of PTPase-MEG1 protein
Antibody Type	Primary antibody
Immunogen	Recombinant fusion protein of human PTPase-MEG1. The exact sequence is proprietary.
Purification	The antibody was purified by immunogen affinity chromatography.
Molecular Weight	Predicted: 105 kD; Observed: 115 kD
Form/Buffer	Liquid in 0.42% Potassium phosphate, 0.87% Sodium chloride, pH 7.3, 30% glycerol, and 0.01% sodium azide.
Alternative Names	Tyrosine-protein phosphatase non-receptor type 4; Protein-tyrosine phosphatase MEG1; MEG; PTPase-MEG1
Gene Symbol	PTPN4
Entrez Gene	5775(Human); 19258(Mouse)
SwissProt	P29074(Human); Q9WU22(Mouse)

*AREX continuously optimizes our products. Webpage content may not reflect the latest updates. For inquiries, please contact info@arexbio.com or your local distributor.

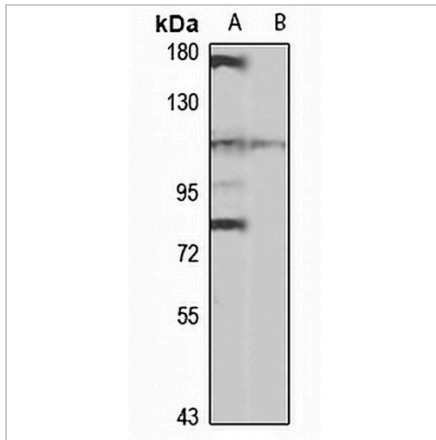
*Clone Number, Reactivity, Source/Host and Clonality can be found in the product name and Key Features section above.

DATASHEET

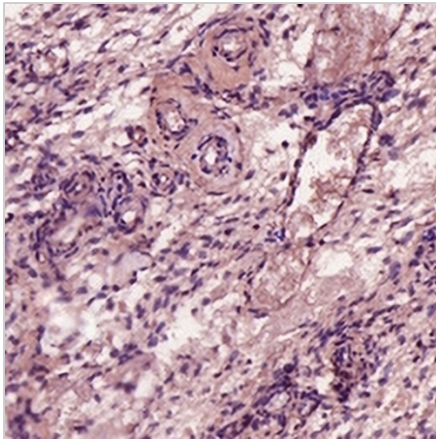
PTPase-MEG1 Rabbit Polyclonal Antibody

CAT. NO. APA16626

DATA



Western blot analysis of PTPase-MEG1 expression in K562 (A), rat brain (B) whole cell lysates. (Predicted band size: 105 kD; Observed band size: 115 kD)



Immunohistochemical analysis of PTPase-MEG1 staining in human oophoroma formalin fixed paraffin embedded tissue section. The section was pre-treated using heat mediated antigen retrieval with sodium citrate buffer (pH 6.0). The section was then incubated with the antibody at room temperature and detected using an HRP conjugated compact polymer system. DAB was used as the chromogen. The section was then counterstained with haematoxylin and mounted with DPX.

STORAGE

Store at 4°C short term. For long term storage, store at -20°C, avoiding freeze/thaw cycles.

NOTE

For Research Use Only. Not for diagnostic, therapeutics, prophylactic or in vivo use.