

DATASHEET

PTP delta Rabbit Polyclonal Antibody

CAT. NO. APA16628

KEY FEATURES

Target	PTP delta	Source / Host	Rabbit
Reactivity	Human, Mouse, Rat	Clonality	Polyclonal
Applications	WB	Conjugation	Unconjugated
Form / Buffer	Liquid in 0.42% Potassium phosphate, 0.87% Sodium chloride, pH 7.3, 30% glycerol, and 0.01% sodium azide.		Storage at -20°C

BACKGROUND

Can bidirectionally induce pre- and post-synaptic differentiation of neurons by mediating interaction with IL1RAP and IL1RAPL1 trans-synaptically. Involved in pre-synaptic differentiation through interaction with SLITRK2.

APPLICATION

To ensure optimal assay performance, AREX recommends conducting reagent titration tailored to each testing system for optimal detection results.

WB	1:500 - 1:2000
----	----------------

*Results are sample-specific. Please refer to your local assay conditions and test parameters for reference.

PRODUCT OVERVIEW

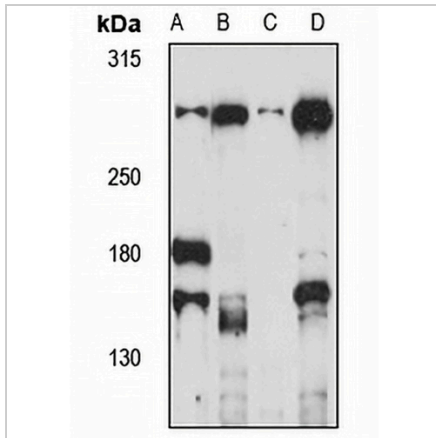
Description	Rabbit polyclonal antibody to PTP delta
Specificity	Recognizes endogenous levels of PTP delta protein
Antibody Type	Primary antibody
Immunogen	Recombinant fusion protein of human PTP delta. The exact sequence is proprietary.
Purification	The antibody was purified by immunogen affinity chromatography.
Molecular Weight	Predicted: 156; Observed: 300 kD
Form/Buffer	Liquid in 0.42% Potassium phosphate, 0.87% Sodium chloride, pH 7.3, 30% glycerol, and 0.01% sodium azide.
Alternative Names	Receptor-type tyrosine-protein phosphatase delta; Protein-tyrosine phosphatase delta; R-PTP-delta
Gene Symbol	PTPRD
Entrez Gene	5789(Human); 19266(Mouse)
SwissProt	P23468(Human); Q64487(Mouse)

*AREX continuously optimizes our products. Webpage content may not reflect the latest updates. For inquiries, please contact info@arexbio.com or your local distributor.

*Clone Number, Reactivity, Source/Host and Clonality can be found in the product name and Key Features section above.

DATASHEET**PTP delta Rabbit Polyclonal Antibody**

CAT. NO. APA16628

DATA

Western blot analysis of PTP delta expression in Raji (A), mouse kidney (B), mouse heart (C), rat brain (D) whole cell lysates. (Predicted band size: 156; 169; 212; 214 kD; Observed band size: 300 kD)

STORAGE

Store at 4°C short term. For long term storage, store at -20°C, avoiding freeze/thaw cycles.

NOTE

For Research Use Only. Not for diagnostic, therapeutics, prophylactic or in vivo use.