

DATASHEET

LAR Rabbit Polyclonal Antibody

CAT. NO. APA16629

KEY FEATURES

Target	LAR	Source / Host	Rabbit
Reactivity	Human, Mouse, Rat	Clonality	Polyclonal
Applications	WB	Conjugation	Unconjugated
Form / Buffer	Liquid in 0.42% Potassium phosphate, 0.87% Sodium chloride, pH 7.3, 30% glycerol, and 0.01% sodium azide.		Storage at -20°C

BACKGROUND

Possible cell adhesion receptor. It possesses an intrinsic protein tyrosine phosphatase activity (PTPase) and dephosphorylates EPHA2 regulating its activity.; The first PTPase domain has enzymatic activity, while the second one seems to affect the substrate specificity of the first one.

APPLICATION

To ensure optimal assay performance, AREX recommends conducting reagent titration tailored to each testing system for optimal detection results.

WB	1:500 - 1:2000
----	----------------

*Results are sample-specific. Please refer to your local assay conditions and test parameters for reference.

PRODUCT OVERVIEW

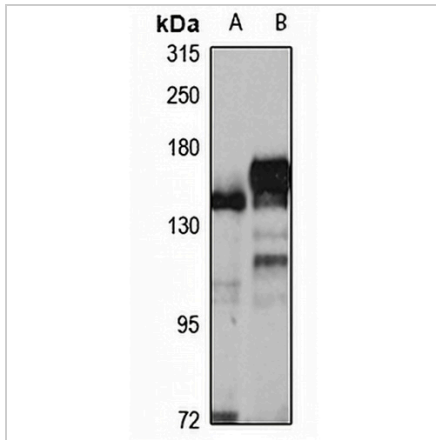
Description	Rabbit polyclonal antibody to LAR
Specificity	Recognizes endogenous levels of LAR protein
Antibody Type	Primary antibody
Immunogen	Recombinant fusion protein of human LAR. The exact sequence is proprietary.
Purification	The antibody was purified by immunogen affinity chromatography.
Molecular Weight	Predicted: 211; Observed: 150 kD
Form/Buffer	Liquid in 0.42% Potassium phosphate, 0.87% Sodium chloride, pH 7.3, 30% glycerol, and 0.01% sodium azide.
Alternative Names	LAR; Receptor-type tyrosine-protein phosphatase F; Leukocyte common antigen related; LAR
Gene Symbol	PTPRF
Entrez Gene	5792(Human); 19268(Mouse); 360406(Rat)
SwissProt	P10586(Human); A2A8L5(Mouse); Q64604(Rat)

*AREX continuously optimizes our products. Webpage content may not reflect the latest updates. For inquiries, please contact info@arexbio.com or your local distributor.

*Clone Number, Reactivity, Source/Host and Clonality can be found in the product name and Key Features section above.

DATASHEET**LAR Rabbit Polyclonal Antibody**

CAT. NO. APA16629

DATA

Western blot analysis of LAR expression in MCF7 (A), mouse liver (B) whole cell lysates.
(Predicted band size: 211; 212 kD; Observed band size: 150 kD)

STORAGE

Store at 4°C short term. For long term storage, store at -20°C, avoiding freeze/thaw cycles.

NOTE

For Research Use Only. Not for diagnostic, therapeutics, prophylactic or in vivo use.