

**DATASHEET**

**CD148 Rabbit Polyclonal Antibody**

CAT. NO. APA16631

**KEY FEATURES**

|               |   |               |                     |
|---------------|---|---------------|---------------------|
| Target        | CD148   | Source / Host | Rabbit              |
| Reactivity    | Human, Mouse, Rat   | Clonality     | Polyclonal          |
| Applications  | WB  | Conjugation   | Unconjugated        |
| Form / Buffer | Liquid in 0.42% Potassium phosphate, 0.87% Sodium chloride, pH 7.3, 30% glycerol, and 0.01% sodium azide. |               | Storage<br>at -20°C |

**BACKGROUND**

Tyrosine phosphatase which dephosphorylates or contributes to the dephosphorylation of CTNND1, FLT3, PDGFRB, MET, KDR, LYN, SRC, MAPK1, MAPK3, EGFR, TJP1, OCLN, PIK3R1 and PIK3R2 . Plays a role in cell adhesion, migration, proliferation and differentiation . Has a role in megakaryocytes and platelet formation . Involved in vascular development . Regulator of macrophage adhesion and spreading . Positively affects cell-matrix adhesion . Positive regulator of platelet activation and thrombosis. Negative regulator of cell proliferation . Negative regulator of PDGF-stimulated cell migration; through dephosphorylation of PDGFR . Positive regulator of endothelial cell survival, as well as of VEGF-induced SRC and AKT activation; through KDR dephosphorylation .

**APPLICATION**

To ensure optimal assay performance, AREX recommends conducting reagent titration tailored to each testing system for optimal detection results.

|    |                |
|----|----------------|
| WB | 1:500 - 1:2000 |
|----|----------------|

\*Results are sample-specific. Please refer to your local assay conditions and test parameters for reference.

**PRODUCT OVERVIEW**

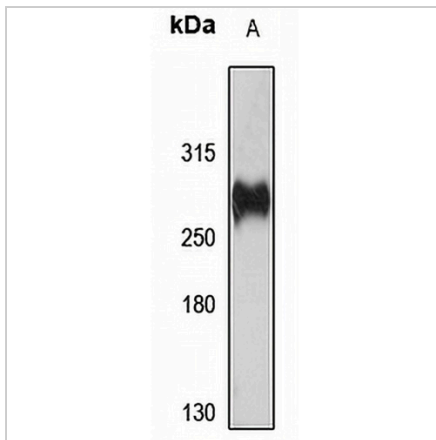
|                   |  |
|-------------------|--|
| Description       | Rabbit polyclonal antibody to CD148  |
| Specificity       | Recognizes endogenous levels of CD148 protein  |
| Antibody Type     | Primary antibody   |
| Immunogen         | Recombinant fusion protein of human CD148. The exact sequence is proprietary.  |
| Purification      | The antibody was purified by immunogen affinity chromatography.  |
| Molecular Weight  | Predicted: 57; Observed: 260 kD  |
| Form/Buffer       | Liquid in 0.42% Potassium phosphate, 0.87% Sodium chloride, pH 7.3, 30% glycerol, and 0.01% sodium azide.  |
| Alternative Names | DEP1; Receptor-type tyrosine-protein phosphatase eta; Protein-tyrosine phosphatase eta; R-PTP-eta; Density-enhanced phosphatase 1; DEP-1; HPTP eta; Protein-tyrosine phosphatase receptor type J; R-PTP-J; CD148 |
| Gene Symbol       | PTPRJ  |
| Entrez Gene       | 5795(Human); 19271(Mouse)  |
| SwissProt         | Q12913(Human); Q64455(Mouse)   |

\*AREX continuously optimizes our products. Webpage content may not reflect the latest updates. For inquiries, please contact [info@arexbio.com](mailto:info@arexbio.com) or your local distributor.

\*Clone Number, Reactivity, Source/Host and Clonality can be found in the product name and Key Features section above.

**DATASHEET****CD148 Rabbit Polyclonal Antibody**

CAT. NO. APA16631

**DATA**

Western blot analysis of CD148 expression in Raji (A) whole cell lysates. (Predicted band size: 57; 145 kD; Observed band size: 260 kD)

**STORAGE**

Store at 4°C short term. For long term storage, store at -20°C, avoiding freeze/thaw cycles.

**NOTE**

For Research Use Only. Not for diagnostic, therapeutics, prophylactic or in vivo use.