

DATASHEET

PTPRR Rabbit Polyclonal Antibody

CAT. NO. APA16633

KEY FEATURES

Target	PTPRR	Source / Host	Rabbit
Reactivity	Human, Mouse, Rat	Clonality	Polyclonal
Applications	WB	Conjugation	Unconjugated
Form / Buffer	Liquid in 0.42% Potassium phosphate, 0.87% Sodium chloride, pH 7.3, 30% glycerol, and 0.01% sodium azide.		Storage at-20°C

BACKGROUND

Sequesters mitogen-activated protein kinases (MAPKs) such as MAPK1, MAPK3 and MAPK14 in the cytoplasm in an inactive form. The MAPKs bind to a dephosphorylated kinase interacting motif, phosphorylation of which by the protein kinase A complex releases the MAPKs for activation and translocation into the nucleus .

APPLICATION

To ensure optimal assay performance, AREX recommends conducting reagent titration tailored to each testing system for optimal detection results.

WB	1:500 - 1:2000
----	----------------

*Results are sample-specific. Please refer to your local assay conditions and test parameters for reference.

PRODUCT OVERVIEW

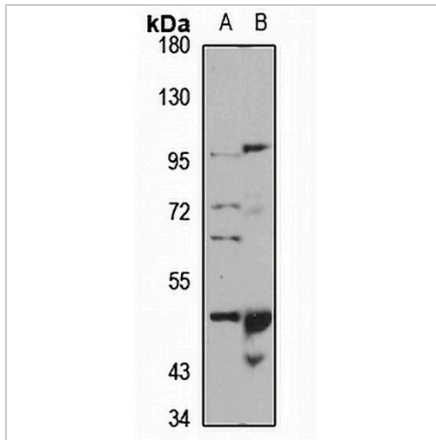
Description	Rabbit polyclonal antibody to PTPRR
Specificity	Recognizes endogenous levels of PTPRR protein
Antibody Type	Primary antibody
Immunogen	Recombinant fusion protein of human PTPRR. The exact sequence is proprietary.
Purification	The antibody was purified by immunogen affinity chromatography.
Molecular Weight	Predicted: 46; Observed: 50 kD
Form/Buffer	Liquid in 0.42% Potassium phosphate, 0.87% Sodium chloride, pH 7.3, 30% glycerol, and 0.01% sodium azide.
Alternative Names	ECPTP; PTPRQ; Receptor-type tyrosine-protein phosphatase R; R-PTP-R; Ch-1PTPase; NC-PTPCOM1; Protein-tyrosine phosphatase PCPTP1
Gene Symbol	PTPRR
Entrez Gene	5801(Human); 94202(Rat)
SwissProt	Q15256(Human); O08617(Rat)

*AREX continuously optimizes our products. Webpage content may not reflect the latest updates. For inquiries, please contact info@arexbio.com or your local distributor.

*Clone Number, Reactivity, Source/Host and Clonality can be found in the product name and Key Features section above.

DATASHEET**PTPRR Rabbit Polyclonal Antibody**

CAT. NO. APA16633

DATA

Western blot analysis of PTPRR expression in HT29 (A), rat heart (B) whole cell lysates. (Predicted band size: 46; 51; 61; 73 kD; Observed band size: 50 kD)

STORAGE

Store at 4°C short term. For long term storage, store at -20°C, avoiding freeze/thaw cycles.

NOTE

For Research Use Only. Not for diagnostic, therapeutics, prophylactic or in vivo use.