

## DATASHEET

# PTRH1 Rabbit Polyclonal Antibody

CAT. NO. APA16634

### KEY FEATURES

Target	PTRH1	Source / Host	Rabbit
Reactivity	Human	Clonality	Polyclonal
Applications	WB	Conjugation	Unconjugated
Form / Buffer	Liquid in 0.42% Potassium phosphate, 0.87% Sodium chloride, pH 7.3, 30% glycerol, and 0.01% sodium azide.		Storage at -20°C

### BACKGROUND

Peptidyl-tRNA hydrolase that cleaves nascent chains-tRNAs that are not stably fixed in the P-site of 60S ribosome-nascent chain complexes. Acts downstream of the ribosome-associated quality control (RQC) pathway to release non-ubiquitinated nascent chains from 60S and 80S ribosome-nascent chain complexes. Does not act on ubiquitinated nascent chains, which are cleaved by ANKZF1 for degradation.

### APPLICATION

To ensure optimal assay performance, AREX recommends conducting reagent titration tailored to each testing system for optimal detection results.

WB	1:500 - 1:2000
----	----------------

\*Results are sample-specific. Please refer to your local assay conditions and test parameters for reference.

### PRODUCT OVERVIEW

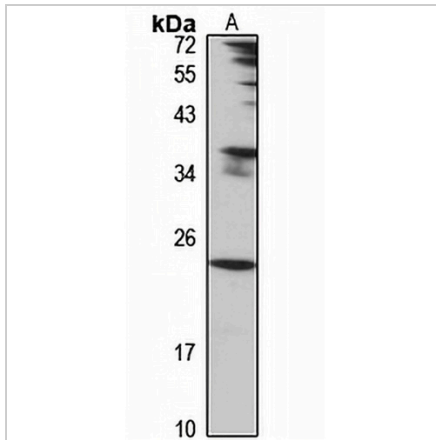
Description	Rabbit polyclonal antibody to PTRH1
Specificity	Recognizes endogenous levels of PTRH1 protein
Antibody Type	Primary antibody
Immunogen	Recombinant fusion protein of human PTRH1. The exact sequence is proprietary.
Purification	The antibody was purified by immunogen affinity chromatography.
Molecular Weight	Predicted: 22 kD; Observed: 23 kD
Form/Buffer	Liquid in 0.42% Potassium phosphate, 0.87% Sodium chloride, pH 7.3, 30% glycerol, and 0.01% sodium azide.
Alternative Names	C9orf115; Probable peptidyl-tRNA hydrolase; PTH
Gene Symbol	PTRH1
Entrez Gene	138428(Human)
SwissProt	Q86Y79(Human)

\*AREX continuously optimizes our products. Webpage content may not reflect the latest updates. For inquiries, please contact [info@arexbio.com](mailto:info@arexbio.com) or your local distributor.

\*Clone Number, Reactivity, Source/Host and Clonality can be found in the product name and Key Features section above.

**DATASHEET****PTRH1 Rabbit Polyclonal Antibody**

CAT. NO. APA16634

**DATA**

Western blot analysis of PTRH1 expression in HeLa (A) whole cell lysates. (Predicted band size: 22 kD; Observed band size: 23 kD)

**STORAGE**

Store at 4°C short term. For long term storage, store at -20°C, avoiding freeze/thaw cycles.

**NOTE**

For Research Use Only. Not for diagnostic, therapeutics, prophylactic or in vivo use.