

DATASHEET

QRSL1 Rabbit Polyclonal Antibody

CAT. NO. APA16644

KEY FEATURES

Target	QRSL1	Source / Host	Rabbit
Reactivity	Human, Mouse, Rat	Clonality	Polyclonal
Applications	WB	Conjugation	Unconjugated
Form / Buffer	Liquid in 0.42% Potassium phosphate, 0.87% Sodium chloride, pH 7.3, 30% glycerol, and 0.01% sodium azide.		Storage at -20°C

BACKGROUND

Allows the formation of correctly charged Gln-tRNA(Gln) through the transamidation of misacylated Glu-tRNA(Gln) in the mitochondria. The reaction takes place in the presence of glutamine and ATP through an activated gamma-phospho-Glu-tRNA(Gln).

APPLICATION

To ensure optimal assay performance, AREX recommends conducting reagent titration tailored to each testing system for optimal detection results.

WB	1:500 - 1:2000
----	----------------

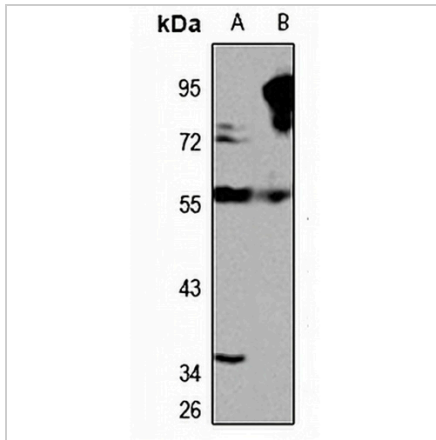
*Results are sample-specific. Please refer to your local assay conditions and test parameters for reference.

PRODUCT OVERVIEW

Description	Rabbit polyclonal antibody to QRSL1
Specificity	Recognizes endogenous levels of QRSL1 protein
Antibody Type	Primary antibody
Immunogen	Recombinant fusion protein of human QRSL1. The exact sequence is proprietary.
Purification	The antibody was purified by immunogen affinity chromatography.
Molecular Weight	Predicted: 32; Observed: 57 kD
Form/Buffer	Liquid in 0.42% Potassium phosphate, 0.87% Sodium chloride, pH 7.3, 30% glycerol, and 0.01% sodium azide.
Alternative Names	Glutamyl-tRNA(Gln) amidotransferase subunit A mitochondrial; Glu-AdT subunit A; Glutaminyl-tRNA synthase-like protein 1
Gene Symbol	QRSL1
Entrez Gene	55278(Human); 76563(Mouse); 309911(Rat)
SwissProt	Q9H0R6(Human); Q9CZN8(Mouse); Q5FWT5(Rat)

*AREX continuously optimizes our products. Webpage content may not reflect the latest updates. For inquiries, please contact info@arexbio.com or your local distributor.

*Clone Number, Reactivity, Source/Host and Clonality can be found in the product name and Key Features section above.

DATASHEET**QRSL1 Rabbit Polyclonal Antibody****CAT. NO. APA16644****DATA**

Western blot analysis of QRSL1 expression in HeLa (A), mouse kidney (B) whole cell lysates. (Predicted band size: 32; 57 kD; Observed band size: 57 kD)

STORAGE

Store at 4°C short term. For long term storage, store at -20°C, avoiding freeze/thaw cycles.

NOTE

For Research Use Only. Not for diagnostic, therapeutics, prophylactic or in vivo use.