

DATASHEET
RABGGTB Rabbit Polyclonal Antibody
CAT. NO. APA16656
KEY FEATURES

Target	RABGGTB	Source / Host	Rabbit
Reactivity	Human, Mouse, Rat	Clonality	Polyclonal
Applications	WB, IHC	Conjugation	Unconjugated
Form / Buffer	Liquid in 0.42% Potassium phosphate, 0.87% Sodium chloride, pH 7.3, 30% glycerol, and 0.01% sodium azide.		Storage at -20°C

BACKGROUND

Catalyzes the transfer of a geranylgeranyl moiety from geranylgeranyl diphosphate to both cysteines of Rab proteins with the C-terminal sequence -XXCC, -XCXC and -CCXX, such as RAB1A, RAB3A, RAB5A and RAB7A. Catalytic subunit of the geranylgeranyl transferase type 3 (GGTase-3) complex. The GGTase-3 complex geranylgeranylates and targets FBXL2 to the cellular membranes, where FBXL2 forms part of the E3 ubiquitin-protein ligase complex SCF(FBXL2) that mediates the degradation of membrane-anchored proteins. The GGTase-3 complex geranylgeranylates Golgi v-SNARE protein YKT6 at 'Cys-194' and this prenylation is required for Golgi SNARE complex assembly.

APPLICATION

To ensure optimal assay performance, AREX recommends conducting reagent titration tailored to each testing system for optimal detection results.

WB	1:500 - 1:2000
IHC	1:50 - 1:200

*Results are sample-specific. Please refer to your local assay conditions and test parameters for reference.

PRODUCT OVERVIEW

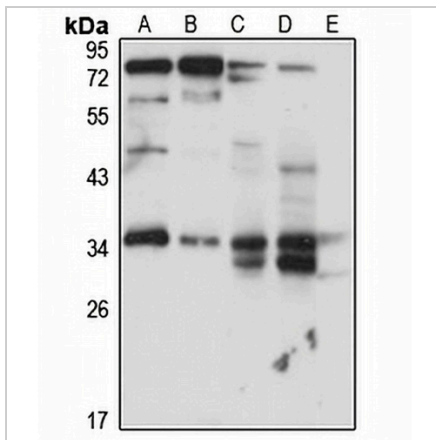
Description	Rabbit polyclonal antibody to RABGGTB
Specificity	Recognizes endogenous levels of RABGGTB protein
Antibody Type	Primary antibody
Immunogen	Recombinant fusion protein of human RABGGTB. The exact sequence is proprietary.
Purification	The antibody was purified by immunogen affinity chromatography.
Molecular Weight	Predicted: 36 kD; Observed: 37 kD
Form/Buffer	Liquid in 0.42% Potassium phosphate, 0.87% Sodium chloride, pH 7.3, 30% glycerol, and 0.01% sodium azide.
Alternative Names	GGTB; Geranylgeranyl transferase type-2 subunit beta; Geranylgeranyl transferase type II subunit beta; GGTase-II-beta; Rab geranyl-geranyltransferase subunit beta; Rab GG transferase beta; Rab GGTase beta; Rab geranylgeranyltransferase subunit beta; Type II protein geranyl-geranyltransferase subunit beta
Gene Symbol	RABGGTB
Entrez Gene	5876(Human); 19352(Mouse); 25533(Rat)
SwissProt	P53611(Human); P53612(Mouse); Q08603(Rat)

*AREX continuously optimizes our products. Webpage content may not reflect the latest updates. For inquiries, please contact info@arexbio.com or your local distributor.

*Clone Number, Reactivity, Source/Host and Clonality can be found in the product name and Key Features section above.

DATASHEET**RABGGTB Rabbit Polyclonal Antibody**

CAT. NO. APA16656

DATA

Western blot analysis of RABGGTB expression in HeLa (A), HepG2 (B), mouse kidney (C), mouse liver (D), rat brain (E) whole cell lysates. (Predicted band size: 36 kD; Observed band size: 37 kD)

STORAGE

Store at 4°C short term. For long term storage, store at -20°C, avoiding freeze/thaw cycles.

NOTE

For Research Use Only. Not for diagnostic, therapeutics, prophylactic or in vivo use.