

## DATASHEET

# Rab L3 Rabbit Polyclonal Antibody

CAT. NO. APA16658

### KEY FEATURES

Target	Rab L3	Source / Host	Rabbit
Reactivity	Human, Mouse	Clonality	Polyclonal
Applications	WB, IF/ICC	Conjugation	Unconjugated
Form / Buffer	Liquid in 0.42% Potassium phosphate, 0.87% Sodium chloride, pH 7.3, 30% glycerol, and 0.01% sodium azide.		Storage at -20°C

### BACKGROUND

Small GTPase required for KRAS signaling regulation and modulation of cell proliferation . Regulator of KRAS prenylation, and probably prenylation of other small GTPases . Required for lymphocyte development and function . Not required for myeloid cell development . Interacts with Rab11 to promote ciliary vesicle formation at the mother centriole, thereby regulating early ciliogenesis. The GTP-binding capacity of RABL3 is essential for ciliogenesis .

### APPLICATION

To ensure optimal assay performance, AREX recommends conducting reagent titration tailored to each testing system for optimal detection results.

WB	1:500 - 1:2000
IF/ICC	1:50 - 1:200

\*Results are sample-specific. Please refer to your local assay conditions and test parameters for reference.

### PRODUCT OVERVIEW

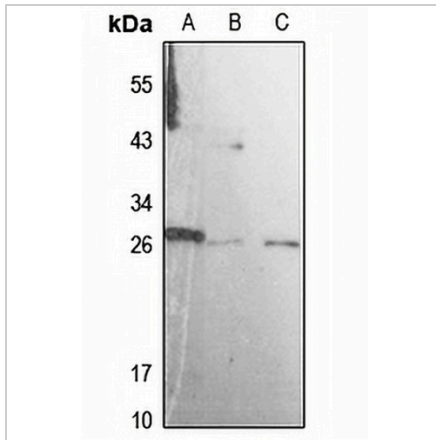
Description	Rabbit polyclonal antibody to Rab L3
Specificity	Recognizes endogenous levels of Rab L3 protein
Antibody Type	Primary antibody
Immunogen	Recombinant fusion protein of human Rab L3. The exact sequence is proprietary.
Purification	The antibody was purified by immunogen affinity chromatography.
Molecular Weight	Predicted: 26 kD; Observed: 26 kD
Form/Buffer	Liquid in 0.42% Potassium phosphate, 0.87% Sodium chloride, pH 7.3, 30% glycerol, and 0.01% sodium azide.
Alternative Names	Rab-like protein 3
Gene Symbol	RABL3
Entrez Gene	285282(Human); 67657(Mouse)
SwissProt	Q5HYI8(Human); Q9D4V7(Mouse)

\*AREX continuously optimizes our products. Webpage content may not reflect the latest updates. For inquiries, please contact [info@arexbio.com](mailto:info@arexbio.com) or your local distributor.

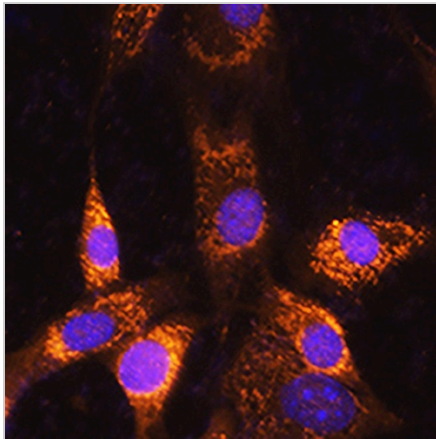
\*Clone Number, Reactivity, Source/Host and Clonality can be found in the product name and Key Features section above.

**DATASHEET****Rab L3 Rabbit Polyclonal Antibody**

CAT. NO. APA16658

**DATA**

Western blot analysis of Rab L3 expression in MCF7 (A), mouse brain (B), mouse lung (C) whole cell lysates. (Predicted band size: 26 kD; Observed band size: 26 kD)



Immunofluorescent analysis of Rab L3 staining in NIH3T3 cells. Formalin-fixed cells were permeabilized with 0.1% Triton X-100 in TBS for 5-10 minutes and blocked with 3% BSA-PBS for 30 minutes at room temperature. Cells were probed with the primary antibody in 3% BSA-PBS and incubated overnight at 4 °C in a humidified chamber. Cells were washed with PBST and incubated with a AREX® Fluor 594-conjugated secondary antibody (red) in PBS at room temperature in the dark. DAPI was used to stain the cell nuclei (blue).

**STORAGE**

Store at 4°C short term. For long term storage, store at -20°C, avoiding freeze/thaw cycles.

**NOTE**

For Research Use Only. Not for diagnostic, therapeutics, prophylactic or in vivo use.