

DATASHEET

RalGPS1 Rabbit Polyclonal Antibody

CAT. NO. APA16661

KEY FEATURES

Target	RalGPS1	Source / Host	Rabbit
Reactivity	Human, Mouse	Clonality	Polyclonal
Applications	WB	Conjugation	Unconjugated
Form / Buffer	Liquid in 0.42% Potassium phosphate, 0.87% Sodium chloride, pH 7.3, 30% glycerol, and 0.01% sodium azide.	Storage	at-20°C

BACKGROUND

Guanine nucleotide exchange factor (GEF) for the small GTPase RALA. May be involved in cytoskeletal organization . Guanine nucleotide exchange factor for.

APPLICATION

To ensure optimal assay performance, AREX recommends conducting reagent titration tailored to each testing system for optimal detection results.

WB	1:500 - 1:2000
----	----------------

*Results are sample-specific. Please refer to your local assay conditions and test parameters for reference.

PRODUCT OVERVIEW

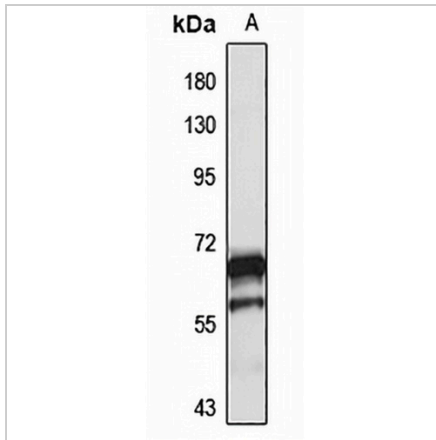
Description	Rabbit polyclonal antibody to RalGPS1
Specificity	Recognizes endogenous levels of RalGPS1 protein
Antibody Type	Primary antibody
Immunogen	Recombinant fusion protein of human RalGPS1. The exact sequence is proprietary.
Purification	The antibody was purified by immunogen affinity chromatography.
Molecular Weight	Predicted: 11; Observed: 62 kD
Form/Buffer	Liquid in 0.42% Potassium phosphate, 0.87% Sodium chloride, pH 7.3, 30% glycerol, and 0.01% sodium azide.
Alternative Names	KIAA0351; RALGEF2; Ras-specific guanine nucleotide-releasing factor RalGPS1; Ral GEF with PH domain and SH3-binding motif 1; Ral guanine nucleotide exchange factor 2; RalGEF 2; RalA exchange factor RalGPS1
Gene Symbol	RALGPS1
Entrez Gene	9649(Human); 241308(Mouse)
SwissProt	Q5JS13(Human); A2AR50(Mouse)

*AREX continuously optimizes our products. Webpage content may not reflect the latest updates. For inquiries, please contact info@arexbio.com or your local distributor.

*Clone Number, Reactivity, Source/Host and Clonality can be found in the product name and Key Features section above.

DATASHEET**RalGPS1 Rabbit Polyclonal Antibody**

CAT. NO. APA16661

DATA

Western blot analysis of RalGPS1 expression in HT29 (A) whole cell lysates. (Predicted band size: 11; 24; 34; 43; 58; 59; 62 kD; Observed band size: 62 kD)

STORAGE

Store at 4°C short term. For long term storage, store at -20°C, avoiding freeze/thaw cycles.

NOTE

For Research Use Only. Not for diagnostic, therapeutics, prophylactic or in vivo use.