

DATASHEET

EPAC2 Rabbit Polyclonal Antibody

CAT. NO. APA16666

KEY FEATURES

Target	EPAC2	Source / Host	Rabbit
Reactivity	Human, Mouse, Rat	Clonality	Polyclonal
Applications	WB	Conjugation	Unconjugated
Form / Buffer	Liquid in 0.42% Potassium phosphate, 0.87% Sodium chloride, pH 7.3, 30% glycerol, and 0.01% sodium azide.		Storage at -20°C

BACKGROUND

Guanine nucleotide exchange factor (GEF) for RAP1A, RAP1B and RAP2A small GTPases that is activated by binding cAMP. Does not seem to activate RAB3A. Involved in cAMP-dependent, PKA-independent exocytosis through interaction with RIMS2 .

APPLICATION

To ensure optimal assay performance, AREX recommends conducting reagent titration tailored to each testing system for optimal detection results.

WB	1:500 - 1:2000
----	----------------

*Results are sample-specific. Please refer to your local assay conditions and test parameters for reference.

PRODUCT OVERVIEW

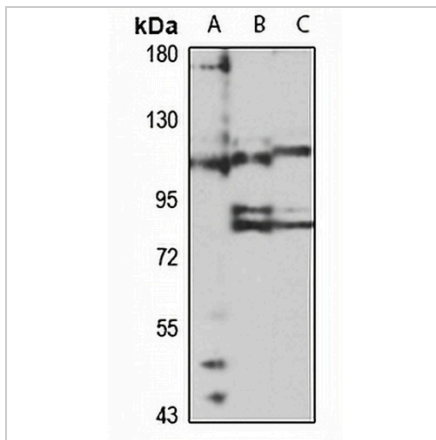
Description	Rabbit polyclonal antibody to EPAC2
Specificity	Recognizes endogenous levels of EPAC2 protein
Antibody Type	Primary antibody
Immunogen	Recombinant fusion protein of human EPAC2. The exact sequence is proprietary.
Purification	The antibody was purified by immunogen affinity chromatography.
Molecular Weight	Predicted: 79; Observed: 115 kD
Form/Buffer	Liquid in 0.42% Potassium phosphate, 0.87% Sodium chloride, pH 7.3, 30% glycerol, and 0.01% sodium azide.
Alternative Names	CGEF2; EPAC2; Rap guanine nucleotide exchange factor 4; Exchange factor directly activated by cAMP 2; Exchange protein directly activated by cAMP 2; EPAC 2; cAMP-regulated guanine nucleotide exchange factor II; cAMP-GEFII
Gene Symbol	RAPGEF4
Entrez Gene	11069(Human); 56508(Mouse)
SwissProt	Q8WZA2(Human); Q9EQZ6(Mouse); Q9Z1C7(Rat)

*AREX continuously optimizes our products. Webpage content may not reflect the latest updates. For inquiries, please contact info@arexbio.com or your local distributor.

*Clone Number, Reactivity, Source/Host and Clonality can be found in the product name and Key Features section above.

DATASHEET**EPAC2 Rabbit Polyclonal Antibody**

CAT. NO. APA16666

DATA

Western blot analysis of EPAC2 expression in SHSY5Y (A), mouse brain (B), rat brain (C) whole cell lysates. (Predicted band size: 79; 96; 98; 99; 115 kD; Observed band size: 115 kD)

STORAGE

Store at 4°C short term. For long term storage, store at -20°C, avoiding freeze/thaw cycles.

NOTE

For Research Use Only. Not for diagnostic, therapeutics, prophylactic or in vivo use.