

## DATASHEET

# RASAL2 Rabbit Polyclonal Antibody

CAT. NO. APA16672

### KEY FEATURES

Target	RASAL2	Source / Host	Rabbit
Reactivity	Human, Mouse, Rat	Clonality	Polyclonal
Applications	WB, IF/ICC	Conjugation	Unconjugated
Form / Buffer	Liquid in 0.42% Potassium phosphate, 0.87% Sodium chloride, pH 7.3, 30% glycerol, and 0.01% sodium azide.	Storage	at-20°C

### BACKGROUND

Inhibitory regulator of the Ras-cyclic AMP pathway.

### APPLICATION

To ensure optimal assay performance, AREX recommends conducting reagent titration tailored to each testing system for optimal detection results.

WB	1:500 - 1:2000
IF/ICC	1:50 - 1:200

\*Results are sample-specific. Please refer to your local assay conditions and test parameters for reference.

### PRODUCT OVERVIEW

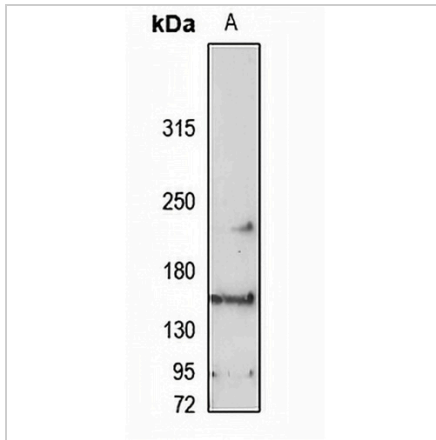
Description	Rabbit polyclonal antibody to RASAL2
Specificity	Recognizes endogenous levels of RASAL2 protein
Antibody Type	Primary antibody
Immunogen	Recombinant fusion protein of human RASAL2. The exact sequence is proprietary.
Purification	The antibody was purified by immunogen affinity chromatography.
Molecular Weight	Predicted: 128; Observed: 160 kD
Form/Buffer	Liquid in 0.42% Potassium phosphate, 0.87% Sodium chloride, pH 7.3, 30% glycerol, and 0.01% sodium azide.
Alternative Names	NGAP; Ras GTPase-activating protein nGAP; RAS protein activator-like 2
Gene Symbol	RASAL2
Entrez Gene	9462(Human)
SwissProt	Q9UJF2(Human)

\*AREX continuously optimizes our products. Webpage content may not reflect the latest updates. For inquiries, please contact [info@arexbio.com](mailto:info@arexbio.com) or your local distributor.

\*Clone Number, Reactivity, Source/Host and Clonality can be found in the product name and Key Features section above.

**DATASHEET****RASAL2 Rabbit Polyclonal Antibody**

CAT. NO. APA16672

**DATA**

Western blot analysis of RASAL2 expression in HeLa (A) whole cell lysates. (Predicted band size: 128; 143 kD; Observed band size: 160 kD)

**STORAGE**

Store at 4°C short term. For long term storage, store at -20°C, avoiding freeze/thaw cycles.

**NOTE**

For Research Use Only. Not for diagnostic, therapeutics, prophylactic or in vivo use.