

DATASHEET

RasGRP2 Rabbit Polyclonal Antibody

CAT. NO. APA16673

KEY FEATURES

| | | | |
|---------------|---|---------------|---------------------|
| Target | RasGRP2 | Source / Host | Rabbit |
| Reactivity | Human | Clonality | Polyclonal |
| Applications | WB | Conjugation | Unconjugated |
| Form / Buffer | Liquid in 0.42% Potassium phosphate, 0.87% Sodium chloride, pH 7.3, 30% glycerol, and 0.01% sodium azide. | | Storage at -20°C |

BACKGROUND

Functions as a calcium- and DAG-regulated nucleotide exchange factor specifically activating Rap through the exchange of bound GDP for GTP. May also activate other GTPases such as RRAS, RRAS2, NRAS, KRAS but not HRAS. Functions in aggregation of platelets and adhesion of T-lymphocytes and neutrophils probably through inside-out integrin activation. May function in the muscarinic acetylcholine receptor M1/CHRM1 signaling pathway.

APPLICATION

To ensure optimal assay performance, AREX recommends conducting reagent titration tailored to each testing system for optimal detection results.

| | |
|----|----------------|
| WB | 1:500 - 1:2000 |
|----|----------------|

*Results are sample-specific. Please refer to your local assay conditions and test parameters for reference.

PRODUCT OVERVIEW

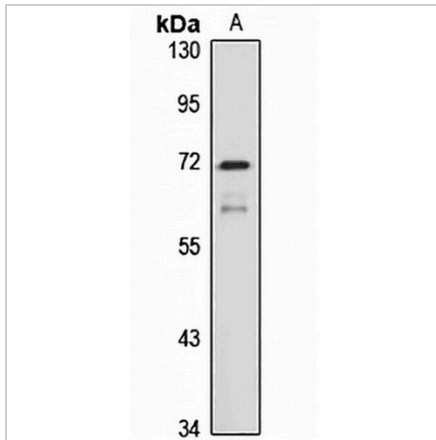
| | |
|-------------------|---|
| Description | Rabbit polyclonal antibody to RasGRP2 |
| Specificity | Recognizes endogenous levels of RasGRP2 protein |
| Antibody Type | Primary antibody |
| Immunogen | Recombinant fusion protein of human RasGRP2. The exact sequence is proprietary. |
| Purification | The antibody was purified by immunogen affinity chromatography. |
| Molecular Weight | Predicted: 16; Observed: 70 kD |
| Form/Buffer | Liquid in 0.42% Potassium phosphate, 0.87% Sodium chloride, pH 7.3, 30% glycerol, and 0.01% sodium azide. |
| Alternative Names | CDC25L; MCG7; RAS guanyl-releasing protein 2; Calcium and DAG-regulated guanine nucleotide exchange factor I; CalDAG-GEFI; Cdc25-like protein; hCDC25L; F25B3.3 kinase-like protein |
| Gene Symbol | RASGRP2 |
| Entrez Gene | 10235(Human) |
| SwissProt | Q7LDG7(Human) |

*AREX continuously optimizes our products. Webpage content may not reflect the latest updates. For inquiries, please contact info@arexbio.com or your local distributor.

*Clone Number, Reactivity, Source/Host and Clonality can be found in the product name and Key Features section above.

DATASHEET**RasGRP2 Rabbit Polyclonal Antibody**

CAT. NO. APA16673

DATA

Western blot analysis of RasGRP2 expression in LO2 (A) whole cell lysates. (Predicted band size: 16; 69; 75 kD; Observed band size: 70 kD)

STORAGE

Store at 4°C short term. For long term storage, store at -20°C, avoiding freeze/thaw cycles.

NOTE

For Research Use Only. Not for diagnostic, therapeutics, prophylactic or in vivo use.