

DATASHEET

RB1CC1 Rabbit Polyclonal Antibody

CAT. NO. APA16674

KEY FEATURES

Target	RB1CC1	Source / Host	Rabbit
Reactivity	Human, Mouse	Clonality	Polyclonal
Applications	WB, IHC	Conjugation	Unconjugated
Form / Buffer	Liquid in 0.42% Potassium phosphate, 0.87% Sodium chloride, pH 7.3, 30% glycerol, and 0.01% sodium azide.		Storage at -20°C

BACKGROUND

Involved in autophagy . Regulates early events but also late events of autophagosome formation through direct interaction with Atg16L1 . Required for the formation of the autophagosome-like double-membrane structure that surrounds the Salmonella-containing vacuole (SCV) during S.typhimurium infection and subsequent xenophagy . Involved in repair of DNA damage caused by ionizing radiation, which subsequently improves cell survival by decreasing apoptosis . Inhibits PTK2/FAK1 and PTK2B/PYK2 kinase activity, affecting their downstream signaling pathways . Plays a role as a modulator of TGF-beta-signaling by restricting substrate specificity of RNF111 . Functions as a DNA-binding transcription factor . Is a potent regulator of the RB1 pathway through induction of RB1 expression .

APPLICATION

To ensure optimal assay performance, AREX recommends conducting reagent titration tailored to each testing system for optimal detection results.

WB	1:500 - 1:2000
IHC	1:50 - 1:200

*Results are sample-specific. Please refer to your local assay conditions and test parameters for reference.

PRODUCT OVERVIEW

Description	Rabbit polyclonal antibody to RB1CC1
Specificity	Recognizes endogenous levels of RB1CC1 protein
Antibody Type	Primary antibody
Immunogen	KLH-conjugated synthetic peptide of human RB1CC1. The exact sequence is proprietary.
Purification	The antibody was purified by immunogen affinity chromatography.
Molecular Weight	Predicted: 182; Observed: 225 kD
Form/Buffer	Liquid in 0.42% Potassium phosphate, 0.87% Sodium chloride, pH 7.3, 30% glycerol, and 0.01% sodium azide.
Alternative Names	KIAA0203; RBICC; RB1-inducible coiled-coil protein 1; FAK family kinase-interacting protein of 200 kDa; FIP200
Gene Symbol	RB1CC1
Entrez Gene	9821(Human); 12421(Mouse)
SwissProt	Q8TDY2(Human); Q9ESK9(Mouse)

*AREX continuously optimizes our products. Webpage content may not reflect the latest updates. For inquiries, please contact info@arexbio.com or your local distributor.

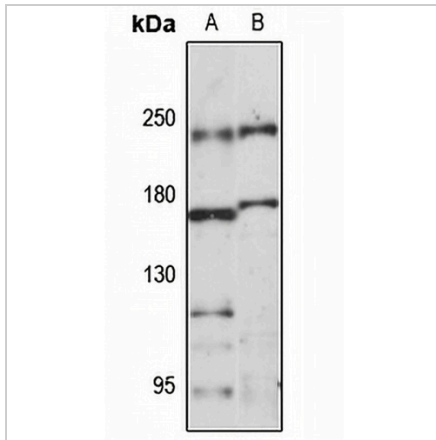
*Clone Number, Reactivity, Source/Host and Clonality can be found in the product name and Key Features section above.

DATASHEET

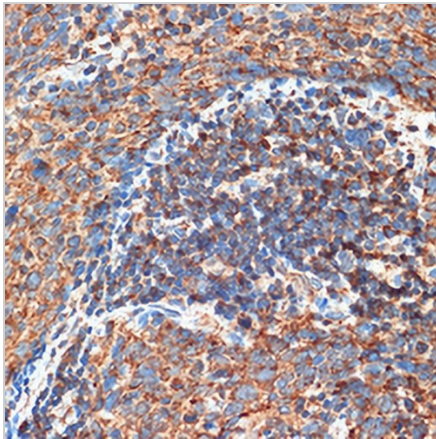
RB1CC1 Rabbit Polyclonal Antibody

CAT. NO. APA16674

DATA



Western blot analysis of RB1CC1 expression in HeLa (A), mouse testis (B) whole cell lysates. (Predicted band size: 182; 183 kD; Observed band size: 225 kD)



Immunohistochemical analysis of RB1CC1 staining in human esophageal cancer formalin fixed paraffin embedded tissue section. The section was pre-treated using heat mediated antigen retrieval with sodium citrate buffer (pH 6.0). The section was then incubated with the antibody at room temperature and detected using an HRP conjugated compact polymer system. DAB was used as the chromogen. The section was then counterstained with haematoxylin and mounted with DPX.

STORAGE

Store at 4°C short term. For long term storage, store at -20°C, avoiding freeze/thaw cycles.

NOTE

For Research Use Only. Not for diagnostic, therapeutics, prophylactic or in vivo use.