

DATASHEET

RBM10 Rabbit Polyclonal Antibody

CAT. NO. APA16676

KEY FEATURES

Target	RBM10	Source / Host	Rabbit
Reactivity	Human, Mouse, Rat	Clonality	Polyclonal
Applications	WB	Conjugation	Unconjugated
Form / Buffer	Liquid in 0.42% Potassium phosphate, 0.87% Sodium chloride, pH 7.3, 30% glycerol, and 0.01% sodium azide.		Storage at -20°C

BACKGROUND

Binds to ssRNA containing the consensus sequence 5'-AGGUAA-3'. May be involved in post-transcriptional processing, most probably in mRNA splicing. Binds to RNA homopolymers, with a preference for poly(G) and poly(U) and little for poly(A). May bind to specific miRNA hairpins.

APPLICATION

To ensure optimal assay performance, AREX recommends conducting reagent titration tailored to each testing system for optimal detection results.

WB	1:500 - 1:2000
----	----------------

*Results are sample-specific. Please refer to your local assay conditions and test parameters for reference.

PRODUCT OVERVIEW

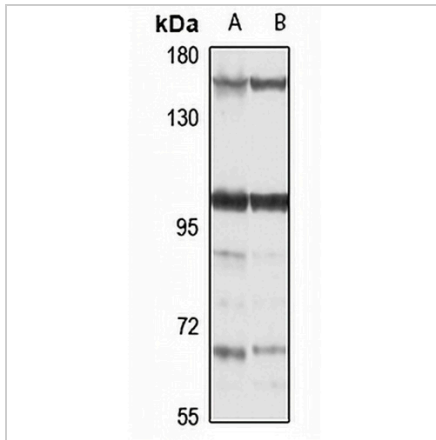
Description	Rabbit polyclonal antibody to RBM10
Specificity	Recognizes endogenous levels of RBM10 protein
Antibody Type	Primary antibody
Immunogen	Recombinant fusion protein of human RBM10. The exact sequence is proprietary.
Purification	The antibody was purified by immunogen affinity chromatography.
Molecular Weight	Predicted: 94; Observed: 105 kD
Form/Buffer	Liquid in 0.42% Potassium phosphate, 0.87% Sodium chloride, pH 7.3, 30% glycerol, and 0.01% sodium azide.
Alternative Names	DXS8237E; GPATC9; GPATCH9; KIAA0122; RNA-binding protein 10; G patch domain-containing protein 9; RNA-binding motif protein 10; RNA-binding protein S1-1; S1-1
Gene Symbol	RBM10
Entrez Gene	8241(Human); 236732(Mouse); 64510(Rat)
SwissProt	P98175(Human); Q99KG3(Mouse); P70501(Rat)

*AREX continuously optimizes our products. Webpage content may not reflect the latest updates. For inquiries, please contact info@arexbio.com or your local distributor.

*Clone Number, Reactivity, Source/Host and Clonality can be found in the product name and Key Features section above.

DATASHEET**RBM10 Rabbit Polyclonal Antibody**

CAT. NO. APA16676

DATA

Western blot analysis of RBM10 expression in MCF7 (A), HEK293T (B) whole cell lysates. (Predicted band size: 94; 103 kD; Observed band size: 105 kD)

STORAGE

Store at 4°C short term. For long term storage, store at -20°C, avoiding freeze/thaw cycles.

NOTE

For Research Use Only. Not for diagnostic, therapeutics, prophylactic or in vivo use.