

DATASHEET

RBM11 Rabbit Polyclonal Antibody

CAT. NO. APA16677

KEY FEATURES

| | | | |
|---------------|-----------------------------------------------------------------------------------------------------------|---------------|--------------------|
| Target | RBM11 | Source / Host | Rabbit |
| Reactivity | Human, Mouse, Rat | Clonality | Polyclonal |
| Applications | WB | Conjugation | Unconjugated |
| Form / Buffer | Liquid in 0.42% Potassium phosphate, 0.87% Sodium chloride, pH 7.3, 30% glycerol, and 0.01% sodium azide. | | Storage at-20°C |

BACKGROUND

Tissue-specific splicing factor with potential implication in the regulation of alternative splicing during neuron and germ cell differentiation. Antagonizes SRSF1-mediated BCL-X splicing. May affect the choice of alternative 5' splice sites by binding to specific sequences in exons and antagonizing the SR protein SRSF1.

APPLICATION

To ensure optimal assay performance, AREX recommends conducting reagent titration tailored to each testing system for optimal detection results.

| | |
|----|----------------|
| WB | 1:500 - 1:2000 |
|----|----------------|

*Results are sample-specific. Please refer to your local assay conditions and test parameters for reference.

PRODUCT OVERVIEW

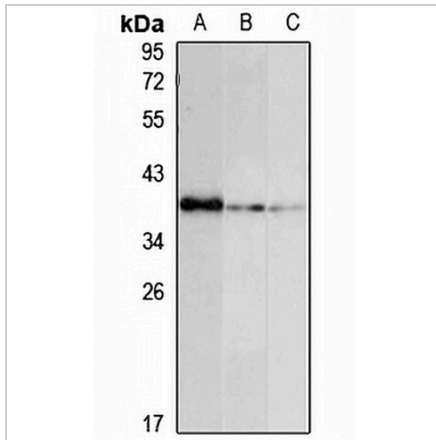
| | |
|-------------------|-----------------------------------------------------------------------------------------------------------|
| Description | Rabbit polyclonal antibody to RBM11 |
| Specificity | Recognizes endogenous levels of RBM11 protein |
| Antibody Type | Primary antibody |
| Immunogen | Recombinant fusion protein of human RBM11. The exact sequence is proprietary. |
| Purification | The antibody was purified by immunogen affinity chromatography. |
| Molecular Weight | Predicted: 26; Observed: 38 kD |
| Form/Buffer | Liquid in 0.42% Potassium phosphate, 0.87% Sodium chloride, pH 7.3, 30% glycerol, and 0.01% sodium azide. |
| Alternative Names | Splicing regulator RBM11; RNA-binding motif protein 11 |
| Gene Symbol | RBM11 |
| Entrez Gene | 54033(Human); 224344(Mouse) |
| SwissProt | P57052(Human); Q80YT9(Mouse) |

*AREX continuously optimizes our products. Webpage content may not reflect the latest updates. For inquiries, please contact info@arexbio.com or your local distributor.

*Clone Number, Reactivity, Source/Host and Clonality can be found in the product name and Key Features section above.

DATASHEET**RBM11 Rabbit Polyclonal Antibody**

CAT. NO. APA16677

DATA

Western blot analysis of RBM11 expression in MCF7 (A), mouse testis (B), rat testis (C) whole cell lysates. (Predicted band size: 26; 32 kD; Observed band size: 38 kD)

STORAGE

Store at 4°C short term. For long term storage, store at -20°C, avoiding freeze/thaw cycles.

NOTE

For Research Use Only. Not for diagnostic, therapeutics, prophylactic or in vivo use.