

**DATASHEET**

**RBM19 Rabbit Polyclonal Antibody**

CAT. NO. APA16681

**KEY FEATURES**

Target	RBM19	Source / Host	Rabbit
Reactivity	Human, Mouse	Clonality	Polyclonal
Applications	WB	Conjugation	Unconjugated
Form / Buffer	Liquid in 0.42% Potassium phosphate, 0.87% Sodium chloride, pH 7.3, 30% glycerol, and 0.01% sodium azide.		Storage at -20°C

**BACKGROUND**

Plays a role in embryo pre-implantation development.

**APPLICATION**

To ensure optimal assay performance, AREX recommends conducting reagent titration tailored to each testing system for optimal detection results.

WB	1:500 - 1:2000
----	----------------

\*Results are sample-specific. Please refer to your local assay conditions and test parameters for reference.

**PRODUCT OVERVIEW**

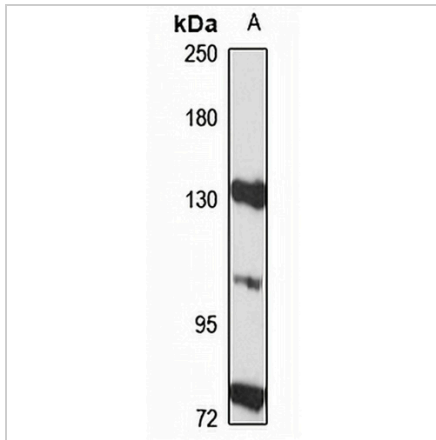
Description	Rabbit polyclonal antibody to RBM19
Specificity	Recognizes endogenous levels of RBM19 protein
Antibody Type	Primary antibody
Immunogen	Recombinant fusion protein of human RBM19. The exact sequence is proprietary.
Purification	The antibody was purified by immunogen affinity chromatography.
Molecular Weight	Predicted: 107 kD; Observed: 107 kD
Form/Buffer	Liquid in 0.42% Potassium phosphate, 0.87% Sodium chloride, pH 7.3, 30% glycerol, and 0.01% sodium azide.
Alternative Names	KIAA0682; Probable RNA-binding protein 19; RNA-binding motif protein 19
Gene Symbol	RBM19
Entrez Gene	9904(Human); 74111(Mouse)
SwissProt	Q9Y4C8(Human); Q8R3C6(Mouse)

\*AREX continuously optimizes our products. Webpage content may not reflect the latest updates. For inquiries, please contact [info@arexbio.com](mailto:info@arexbio.com) or your local distributor.

\*Clone Number, Reactivity, Source/Host and Clonality can be found in the product name and Key Features section above.

**DATASHEET****RBM19 Rabbit Polyclonal Antibody**

CAT. NO. APA16681

**DATA**

Western blot analysis of RBM19 expression in Raji (A) whole cell lysates. (Predicted band size: 107 kD; Observed band size: 107 kD)

**STORAGE**

Store at 4°C short term. For long term storage, store at -20°C, avoiding freeze/thaw cycles.

**NOTE**

For Research Use Only. Not for diagnostic, therapeutics, prophylactic or in vivo use.