

DATASHEET

RBM46 Rabbit Polyclonal Antibody

CAT. NO. APA16685

KEY FEATURES

Target	RBM46	Source / Host	Rabbit
Reactivity	Human, Mouse	Clonality	Polyclonal
Applications	WB	Conjugation	Unconjugated
Form / Buffer	Liquid in 0.42% Potassium phosphate, 0.87% Sodium chloride, pH 7.3, 30% glycerol, and 0.01% sodium azide.		Storage at -20°C

BACKGROUND

Essential for male and female fertility, playing a crucial role in regulating germ cell development by ensuring the proper progression of meiosis prophase I . Regulates mitotic-to-meiotic transition in spermatogenesis by forming a complex with MEIOC and YTHDC2 which recognizes and down-regulates mitotic transcripts for a successful meiotic entry . Required for normal synaptonemal complex formation during meiosis, binding meiotic cohesin subunit mRNAs containing GCCUAU/GUUCGA motifs in their 3'UTRs regions and positively regulating their translation . Required for spermatogonial differentiation in both developing and adult testis .

APPLICATION

To ensure optimal assay performance, AREX recommends conducting reagent titration tailored to each testing system for optimal detection results.

WB	1:500 - 1:2000
----	----------------

*Results are sample-specific. Please refer to your local assay conditions and test parameters for reference.

PRODUCT OVERVIEW

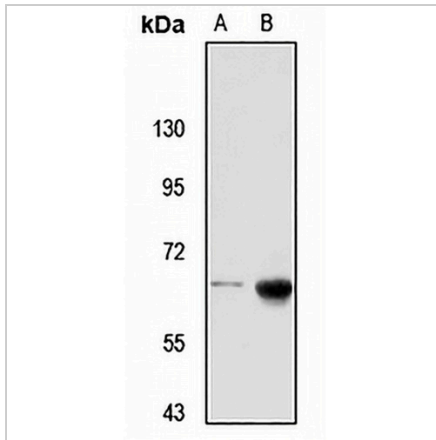
Description	Rabbit polyclonal antibody to RBM46
Specificity	Recognizes endogenous levels of RBM46 protein
Antibody Type	Primary antibody
Immunogen	Recombinant fusion protein of human RBM46. The exact sequence is proprietary.
Purification	The antibody was purified by immunogen affinity chromatography.
Molecular Weight	Predicted: 53; Observed: 65 kD
Form/Buffer	Liquid in 0.42% Potassium phosphate, 0.87% Sodium chloride, pH 7.3, 30% glycerol, and 0.01% sodium azide.
Alternative Names	Probable RNA-binding protein 46; Cancer/testis antigen 68; CT68; RNA-binding motif protein 46
Gene Symbol	RBM46
Entrez Gene	166863(Human); 633285(Mouse)
SwissProt	Q8TBY0(Human); P86049(Mouse)

*AREX continuously optimizes our products. Webpage content may not reflect the latest updates. For inquiries, please contact info@arexbio.com or your local distributor.

*Clone Number, Reactivity, Source/Host and Clonality can be found in the product name and Key Features section above.

DATASHEET**RBM46 Rabbit Polyclonal Antibody**

CAT. NO. APA16685

DATA

Western blot analysis of RBM46 expression in BxPC3 (A), mouse testis (B) whole cell lysates. (Predicted band size: 53; 55; 60 kD; Observed band size: 65 kD)

STORAGE

Store at 4°C short term. For long term storage, store at -20°C, avoiding freeze/thaw cycles.

NOTE

For Research Use Only. Not for diagnostic, therapeutics, prophylactic or in vivo use.