

DATASHEET

RBMS1 Rabbit Polyclonal Antibody

CAT. NO. APA16689

KEY FEATURES

Target	RBMS1	Source / Host	Rabbit
Reactivity	Human, Mouse, Rat	Clonality	Polyclonal
Applications	WB, IHC, IF/ICC	Conjugation	Unconjugated
Form / Buffer	Liquid in 0.42% Potassium phosphate, 0.87% Sodium chloride, pH 7.3, 30% glycerol, and 0.01% sodium azide.		Storage at -20°C

BACKGROUND

Single-stranded DNA binding protein that interacts with the region upstream of the MYC gene. Binds specifically to the DNA sequence motif 5'-[AT]CT[AT][AT]T-3'. Probably has a role in DNA replication.

APPLICATION

To ensure optimal assay performance, AREX recommends conducting reagent titration tailored to each testing system for optimal detection results.

WB	1:500 - 1:2000
IHC	1:50 - 1:200
IF/ICC	1:50 - 1:200

*Results are sample-specific. Please refer to your local assay conditions and test parameters for reference.

PRODUCT OVERVIEW

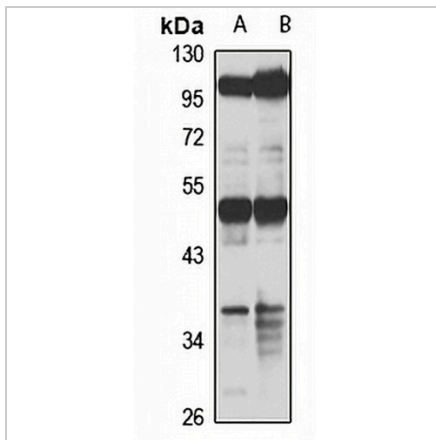
Description	Rabbit polyclonal antibody to RBMS1
Specificity	Recognizes endogenous levels of RBMS1 protein
Antibody Type	Primary antibody
Immunogen	Recombinant fusion protein of human RBMS1. The exact sequence is proprietary.
Purification	The antibody was purified by immunogen affinity chromatography.
Molecular Weight	Predicted: 4; Observed: 50 kD
Form/Buffer	Liquid in 0.42% Potassium phosphate, 0.87% Sodium chloride, pH 7.3, 30% glycerol, and 0.01% sodium azide.
Alternative Names	C2orf12; MSSP; MSSP1; SCR2; RNA-binding motif single-stranded-interacting protein 1; Single-stranded DNA-binding protein MSSP-1; Suppressor of CDC2 with RNA-binding motif 2
Gene Symbol	RBMS1
Entrez Gene	5937(Human); 56878(Mouse); 362138(Rat)
SwissProt	P29558(Human); Q91W59(Mouse); Q5PQP1(Rat)

*AREX continuously optimizes our products. Webpage content may not reflect the latest updates. For inquiries, please contact info@arexbio.com or your local distributor.

*Clone Number, Reactivity, Source/Host and Clonality can be found in the product name and Key Features section above.

DATASHEET**RBMS1 Rabbit Polyclonal Antibody**

CAT. NO. APA16689

DATA

Western blot analysis of RBMS1 expression in HeLa (A), MCF7 (B) whole cell lysates.
(Predicted band size: 4; 44 kD; Observed band size: 50 kD)

STORAGE

Store at 4°C short term. For long term storage, store at -20°C, avoiding freeze/thaw cycles.

NOTE

For Research Use Only. Not for diagnostic, therapeutics, prophylactic or in vivo use.