

DATASHEET

RBPMS Rabbit Polyclonal Antibody

CAT. NO. APA16690

KEY FEATURES

Target	RBPMS	Source / Host	Rabbit
Reactivity	Human, Mouse, Rat	Clonality	Polyclonal
Applications	WB	Conjugation	Unconjugated
Form / Buffer	Liquid in 0.42% Potassium phosphate, 0.87% Sodium chloride, pH 7.3, 30% glycerol, and 0.01% sodium azide.		Storage at -20°C

BACKGROUND

RNA binding protein that mediates the regulation of pre-mRNA alternative splicing (AS) . Acts either as activator (FLNB, HSPG2, LIPA1, MYOCD, PTPRF and PPFIBP1) or repressor (TPM1, ACTN1, ITGA7, PIEZO1, LSM14B, MBNL1 and MBML2) of splicing events on specific pre-mRNA targets . Together with RNA binding proteins RBFOX2 and MBNL1/2, activates a splicing program associated with differentiated contractile vascular smooth muscle cells (SMC) by regulating AS of numerous pre-mRNA involved in actin cytoskeleton and focal adhesion machineries, suggesting a role in promoting a cell differentiated state . Binds to introns, exons and 3'-UTR associated with tandem CAC trinucleotide motifs separated by a variable spacer region, at a minimum as a dimer.

APPLICATION

To ensure optimal assay performance, AREX recommends conducting reagent titration tailored to each testing system for optimal detection results.

WB	1:500 - 1:1000
----	----------------

*Results are sample-specific. Please refer to your local assay conditions and test parameters for reference.

PRODUCT OVERVIEW

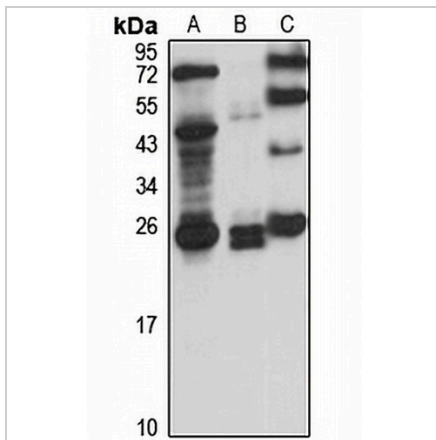
Description	Rabbit polyclonal antibody to RBPMS
Specificity	Recognizes endogenous levels of RBPMS protein
Antibody Type	Primary antibody
Immunogen	Recombinant fusion protein of human RBPMS. The exact sequence is proprietary.
Purification	The antibody was purified by immunogen affinity chromatography.
Molecular Weight	Predicted: 15; Observed: 24 kD
Form/Buffer	Liquid in 0.42% Potassium phosphate, 0.87% Sodium chloride, pH 7.3, 30% glycerol, and 0.01% sodium azide.
Alternative Names	HERMES; RNA-binding protein with multiple splicing; RBP-MS; Heart and RRM expressed sequence; Hermes
Gene Symbol	RBPMS
Entrez Gene	11030(Human); 19663(Mouse)
SwissProt	Q93062(Human); Q9WVB0(Mouse)

*AREX continuously optimizes our products. Webpage content may not reflect the latest updates. For inquiries, please contact info@arexbio.com or your local distributor.

*Clone Number, Reactivity, Source/Host and Clonality can be found in the product name and Key Features section above.

DATASHEET**RBPMS Rabbit Polyclonal Antibody**

CAT. NO. APA16690

DATA

Western blot analysis of RBPMS expression in mouse liver (A), mouse lung (B), rat testis (C) whole cell lysates. (Predicted band size: 15; 17; 21; 22; 24 kD; Observed band size: 24 kD)

STORAGE

Store at 4°C short term. For long term storage, store at -20°C, avoiding freeze/thaw cycles.

NOTE

For Research Use Only. Not for diagnostic, therapeutics, prophylactic or in vivo use.