

DATASHEET

RCBTB2 Rabbit Polyclonal Antibody

CAT. NO. APA16691

KEY FEATURES

Target	RCBTB2	Source / Host	Rabbit
Reactivity	Human, Mouse, Rat	Clonality	Polyclonal
Applications	WB	Conjugation	Unconjugated
Form / Buffer	Liquid in 0.42% Potassium phosphate, 0.87% Sodium chloride, pH 7.3, 30% glycerol, and 0.01% sodium azide.		Storage at -20°C

BACKGROUND

This gene encodes a protein containing two C-terminal BTB/POZ domains that is related to regulator of chromosome condensation (RCC). The encoded protein may act as a guanine nucleotide exchange factor. This gene is observed to be lost or underexpressed in prostate cancers. There is a pseudogene of this gene on chromosome 10. Alternative splicing results in multiple transcript variants.

APPLICATION

To ensure optimal assay performance, AREX recommends conducting reagent titration tailored to each testing system for optimal detection results.

WB	1:500 - 1:2000
----	----------------

*Results are sample-specific. Please refer to your local assay conditions and test parameters for reference.

PRODUCT OVERVIEW

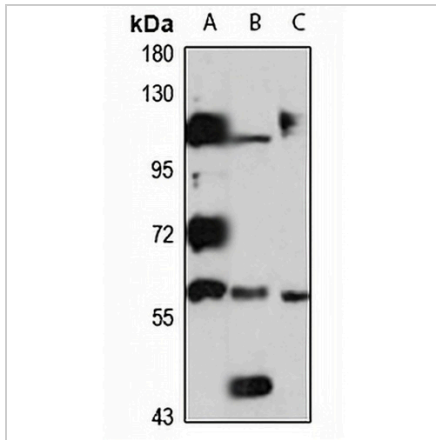
Description	Rabbit polyclonal antibody to RCBTB2
Specificity	Recognizes endogenous levels of RCBTB2 protein
Antibody Type	Primary antibody
Immunogen	Recombinant fusion protein of human RCBTB2. The exact sequence is proprietary.
Purification	The antibody was purified by immunogen affinity chromatography.
Molecular Weight	Predicted: 57; Observed: 60 kD
Form/Buffer	Liquid in 0.42% Potassium phosphate, 0.87% Sodium chloride, pH 7.3, 30% glycerol, and 0.01% sodium azide.
Alternative Names	CHC1L; RLG; RCC1 and BTB domain-containing protein 2; Chromosome condensation 1-like; CHC1-L; RCC1-like G exchanging factor; Regulator of chromosome condensation and BTB domain-containing protein 2
Gene Symbol	RCBTB2
Entrez Gene	1102(Human); 105670(Mouse); 290363(Rat)
SwissProt	O95199(Human); Q99LJ7(Mouse); Q6P798(Rat)

*AREX continuously optimizes our products. Webpage content may not reflect the latest updates. For inquiries, please contact info@arexbio.com or your local distributor.

*Clone Number, Reactivity, Source/Host and Clonality can be found in the product name and Key Features section above.

DATASHEET**RCBTB2 Rabbit Polyclonal Antibody**

CAT. NO. APA16691

DATA

Western blot analysis of RCBTB2 expression in MCF7 (A), mouse pancreas (B), rat thymus (C) whole cell lysates. (Predicted band size: 57; 60 kD; Observed band size: 60 kD)

STORAGE

Store at 4°C short term. For long term storage, store at -20°C, avoiding freeze/thaw cycles.

NOTE

For Research Use Only. Not for diagnostic, therapeutics, prophylactic or in vivo use.