

DATASHEET

RELM beta Rabbit Polyclonal Antibody

CAT. NO. APA16697

KEY FEATURES

Target	RELM beta	Source / Host	Rabbit
Reactivity	Human, Mouse	Clonality	Polyclonal
Applications	WB	Conjugation	Unconjugated
Form / Buffer	Liquid in 0.42% Potassium phosphate, 0.87% Sodium chloride, pH 7.3, 30% glycerol, and 0.01% sodium azide.		Storage at -20°C

BACKGROUND

Probable hormone.

APPLICATION

To ensure optimal assay performance, AREX recommends conducting reagent titration tailored to each testing system for optimal detection results.

WB	1:500 - 1:2000
----	----------------

*Results are sample-specific. Please refer to your local assay conditions and test parameters for reference.

PRODUCT OVERVIEW

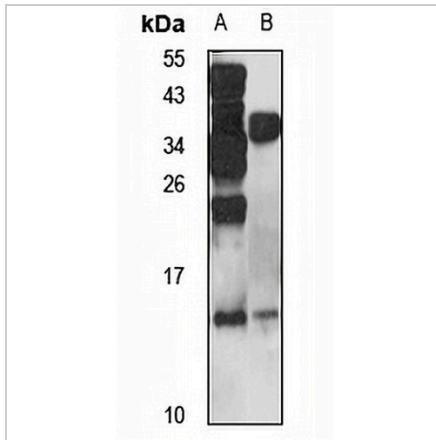
Description	Rabbit polyclonal antibody to RELM beta
Specificity	Recognizes endogenous levels of RELM beta protein
Antibody Type	Primary antibody
Immunogen	Recombinant fusion protein of human RELM beta. The exact sequence is proprietary.
Purification	The antibody was purified by immunogen affinity chromatography.
Molecular Weight	Predicted: 11 kD; Observed: 15 kD
Form/Buffer	Liquid in 0.42% Potassium phosphate, 0.87% Sodium chloride, pH 7.3, 30% glycerol, and 0.01% sodium azide.
Alternative Names	CCRG; FIZZ2; HXCP2; RETNL2; Resistin-like beta; Colon and small intestine-specific cysteine-rich protein; Colon carcinoma-related gene protein; Cysteine-rich secreted protein A12-alpha-like 1; Cysteine-rich secreted protein FIZZ2; RELMbeta
Gene Symbol	RETNLB
Entrez Gene	84666(Human); 57263(Mouse)
SwissProt	Q9BQ08(Human); Q99P86(Mouse)

*AREX continuously optimizes our products. Webpage content may not reflect the latest updates. For inquiries, please contact info@arexbio.com or your local distributor.

*Clone Number, Reactivity, Source/Host and Clonality can be found in the product name and Key Features section above.

DATASHEET**RELM beta Rabbit Polyclonal Antibody**

CAT. NO. APA16697

DATA

Western blot analysis of RELM beta expression in A549 (A), mouse small intestine (B) whole cell lysates. (Predicted band size: 11 kD; Observed band size: 15 kD)

STORAGE

Store at 4°C short term. For long term storage, store at -20°C, avoiding freeze/thaw cycles.

NOTE

For Research Use Only. Not for diagnostic, therapeutics, prophylactic or in vivo use.