

**DATASHEET**

**REV1 Rabbit Polyclonal Antibody**

CAT. NO. APA16698

**KEY FEATURES**

Target	REV1	Source / Host	Rabbit
Reactivity	Human, Mouse, Rat	Clonality	Polyclonal
Applications	WB	Conjugation	Unconjugated
Form / Buffer	Liquid in 0.42% Potassium phosphate, 0.87% Sodium chloride, pH 7.3, 30% glycerol, and 0.01% sodium azide.		Storage at -20°C

**BACKGROUND**

Bifunctional protein involved in the maintenance of genome stability through translesion DNA synthesis (TLS) and antibody diversification via somatic hypermutation and antibody diversification via somatic hypermutation . Functions as a molecular adapter protein at stalled DNA replication, coordinating polymerases recruitment, selection, and switching, in a manner independent of its deoxycytidyl transferase activity . At the site of DNA lesion, recruits and mediates the switch between low-fidelity inserter DNA polymerases, such as POLK, that incorporate nucleotides opposite lesions and the extender DNA polymerase zeta complex which continues DNA synthesis from distorted primer termini .

**APPLICATION**

To ensure optimal assay performance, AREX recommends conducting reagent titration tailored to each testing system for optimal detection results.

WB	1:500 - 1:2000
----	----------------

\*Results are sample-specific. Please refer to your local assay conditions and test parameters for reference.

**PRODUCT OVERVIEW**

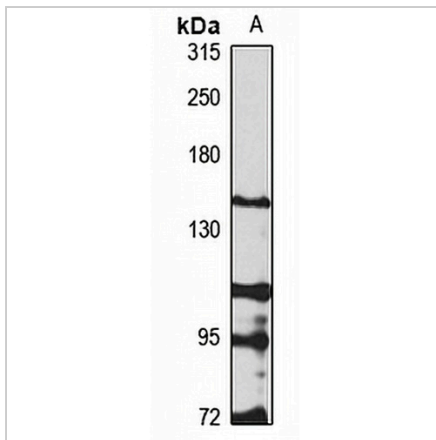
Description	Rabbit polyclonal antibody to REV1
Specificity	Recognizes endogenous levels of REV1 protein
Antibody Type	Primary antibody
Immunogen	Recombinant fusion protein of human REV1. The exact sequence is proprietary.
Purification	The antibody was purified by immunogen affinity chromatography.
Molecular Weight	Predicted: 43; Observed: 145 kD
Form/Buffer	Liquid in 0.42% Potassium phosphate, 0.87% Sodium chloride, pH 7.3, 30% glycerol, and 0.01% sodium azide.
Alternative Names	REV1L; DNA repair protein REV1; Alpha integrin-binding protein 80; AIBP80; Rev1-like terminal deoxycytidyl transferase
Gene Symbol	REV1
Entrez Gene	51455(Human); 56210(Mouse)
SwissProt	Q9UBZ9(Human); Q920Q2(Mouse)

\*AREX continuously optimizes our products. Webpage content may not reflect the latest updates. For inquiries, please contact [info@arexbio.com](mailto:info@arexbio.com) or your local distributor.

\*Clone Number, Reactivity, Source/Host and Clonality can be found in the product name and Key Features section above.

**DATASHEET****REV1 Rabbit Polyclonal Antibody**

CAT. NO. APA16698

**DATA**

Western blot analysis of REV1 expression in MCF7 (A) whole cell lysates. (Predicted band size: 43; 138 kD; Observed band size: 145 kD)

**STORAGE**

Store at 4°C short term. For long term storage, store at -20°C, avoiding freeze/thaw cycles.

**NOTE**

For Research Use Only. Not for diagnostic, therapeutics, prophylactic or in vivo use.